



Price
£650,000

Freehold

5x  3x  2x 

**Primrose Close,
Holborough Lakes, Kent,
ME6**

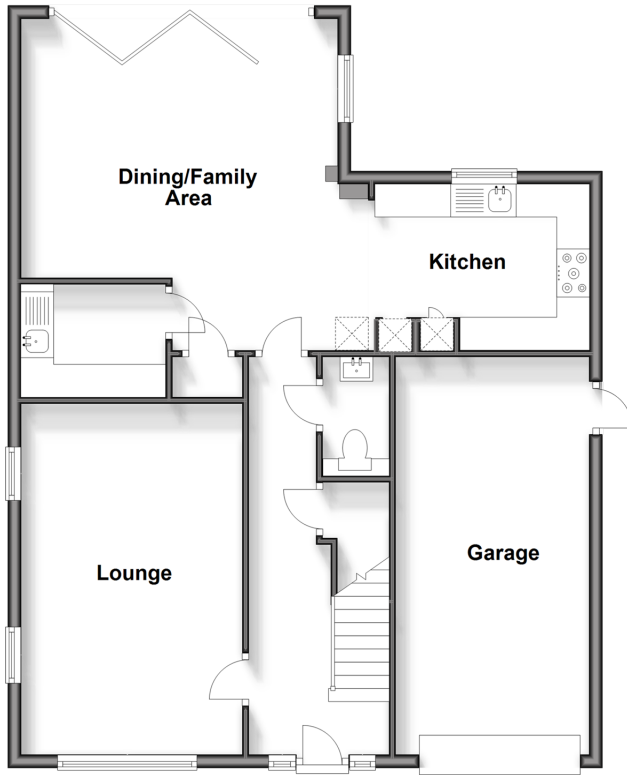
OVER 60?

Secure this property
for up to **59% less!**

Wards
Helping you move forwards

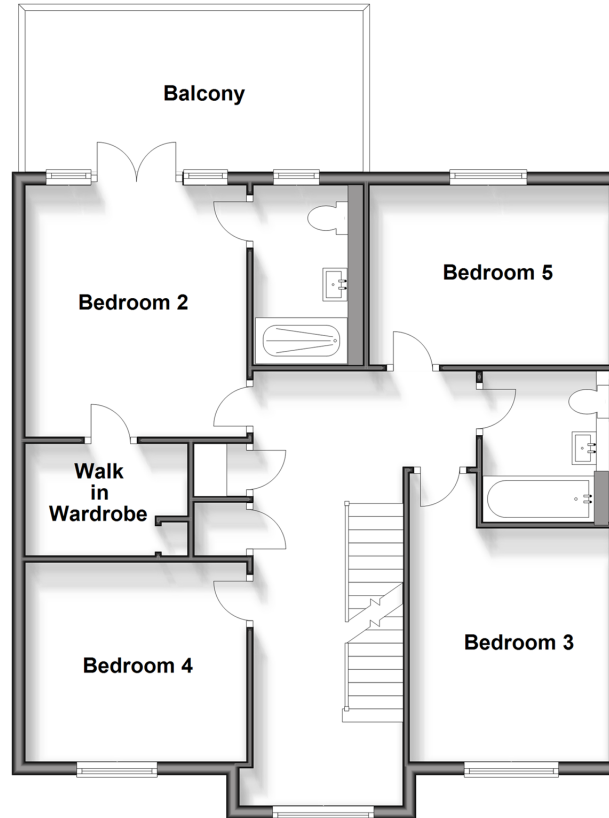
Ground Floor

Approx. 87.4 sq. metres (940.2 sq. feet)



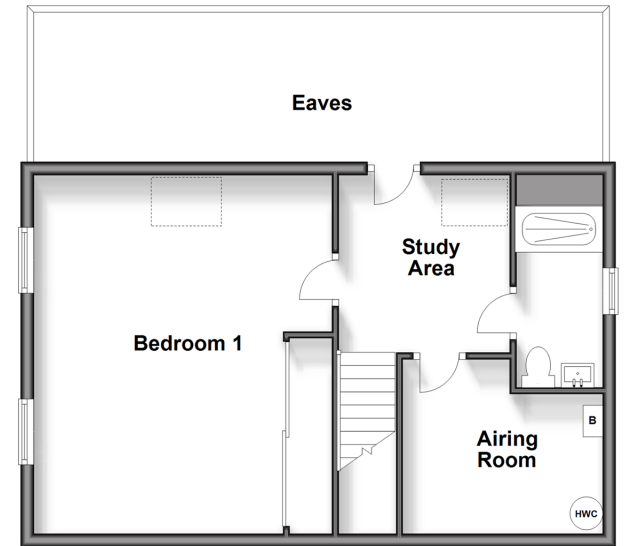
First Floor

Approx. 79.8 sq. metres (859.3 sq. feet)



Second Floor

Approx. 47.3 sq. metres (509.7 sq. feet)



Accommodation

GROUND FLOOR

Entrance Hall
Cloakroom
Kitchen: 12'8 x 8'5 (3.86m x 2.57m)
Dining/Family Area: 16'11 x 16'3 (5.16m x 4.96m)
Utility Room: 7'5 x 5'8 (2.26m x 1.73m)
Lounge: 17'6 x 11'11 (5.34m x 3.63m)

FIRST FLOOR

Landing
Bedroom 2: 11'10 x 11'2 (3.61m x 3.41m)
Balcony
Walk in Wardrobe
En-Suite Shower Room
Bedroom 3: 11'7 x 10'0 (3.53m x 3.05m)
Bedroom 4: 11'2 x 9'11 (3.41m x 3.02m)
Bedroom 5: 13'11 x 8'11 (4.24m x 2.72m)
Bathroom

SECOND FLOOR

Study Area: 8'10 x 8'6 (2.69m x 2.59m)
Bedroom 1: 18'0 x 14'10 (5.49m x 4.52m)
Shower Room
Airing Room: 10'0 x 6'11 (3.05m x 2.11m)

OUTSIDE

Front and Rear Gardens
Garage and Driveway



Main features

- Stunning detached family home in an extremely private setting
- Sought after Holborough Lakes development with no passing traffic
- Impressive bedroom 1 with shower room and study area
- Ample parking so no stress after a long day
- Offered as a chain free sale



Nearest Schools

Primary Schools: Snodland CoFE Primary 0.1 miles, St Katherine's School 0.3 miles, Valley Invicta Primary 0.3 miles. Secondary Schools: Holmesdale Technology College 0.4 miles, Grange Park School 2.1 miles, Aylesford School - Sports College 2.5 miles



Transport Information

Train Stations: Snodland 0.3 miles, New Hythe 1.3 miles, Halling 1.5 miles



Address

Primrose Close, Holborough Lakes, Kent, ME6



Directions

For directions to this property please contact us.



Wards
Helping you move forwards

Call Snodland Branch 01634 245055 ■ wardsof Kent.co.uk



- Legal advice should be taken to verify fixtures/fittings, planning, alterations and/or lease details
- Appliances & services are untested, dimensions are approximate and floor plans are not to scale
- Through a Homewise Home For Life Plan people aged 60+ can secure this property for up to 59% less, by purchasing a Lifetime Lease.



13820702/20240722/CG/LK