



Price

£270,000

Freehold

2x  1x  1x 

**Townsend Road,
Snodland, Kent, ME6**

OVER 60?

Secure this property
for up to **59% less!**

Wards

Helping you move forwards



Main features

- Lovely size home in a desirable quiet spot in Snodland
- Fantastic travel links and amenities nearby
- No onward chain, so could easily be yours sooner than you think
- Ability to move in, but also add your own stamp on
- Handy garage and allocated parking.

Accommodation

GROUND FLOOR

Entrance Porch

Lounge/Diner : 18'0 x 12'0 (5.49m x 3.66m)

Kitchen : 12'0 x 8'0 (3.66m x 2.44m)

Conservatory : 9'0 x 5'0 (2.75m x 1.53m)

FIRST FLOOR

Landing

Bathroom : 8'0 x 4'0 (2.44m x 1.22m)

Bedroom 1 : 12'0 x 10'0 (3.66m x 3.05m)

Bedroom 2 : 12'0 x 8'0 (3.66m x 2.44m)

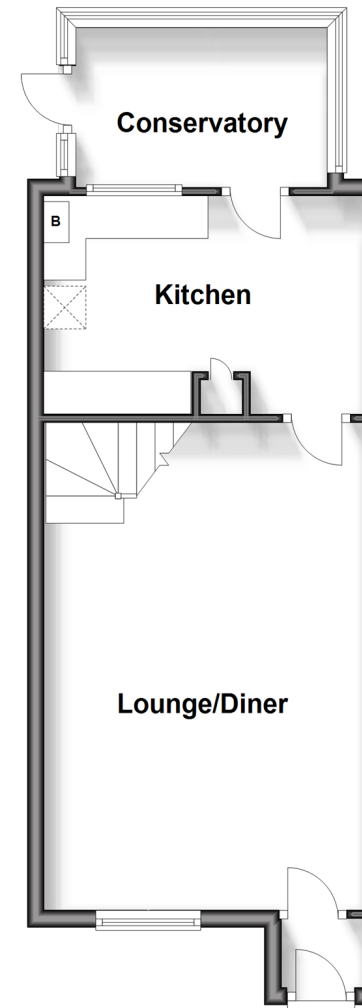
OUTSIDE

Front and Rear Gardens

Garage and Parking

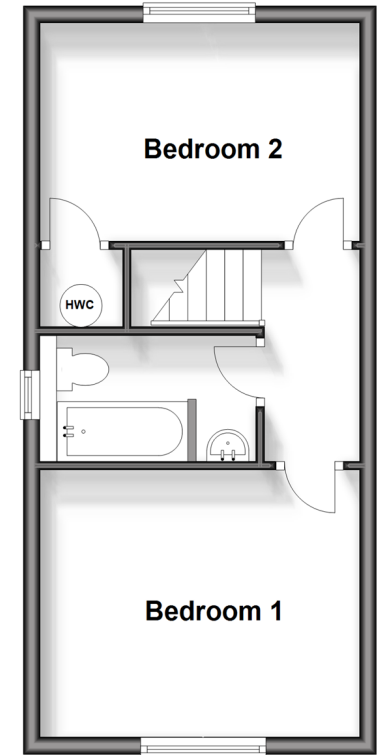
Ground Floor

Approx. 38.6 sq. metres (415.4 sq. feet)



First Floor

Approx. 31.8 sq. metres (342.5 sq. feet)



Call Snodland - 01634 245055 ■ wardsof Kent.co.uk

- Legal advice should be taken to verify fixtures/fittings, planning, alterations and/or lease details
- Appliances & services are untested, dimensions are approximate and floor plans are not to scale
- Through a Homewise Home For Life Plan people aged 60+ can secure this property for up to 59% less, by purchasing a Lifetime Lease.



13821655/20240810/CG/LK