



Price
£425,000

Freehold

4x  2x  1x 

**Cantium Place,
Snodland, Kent, ME6**

Wards
Helping you move forwards

Accommodation

GROUND FLOOR

Hallway

Cloakroom : 5'8 x 2'10 (1.73m x 0.86m)

Kitchen/Breakfast Room: 10'2 x 8'0 (3.10m x 2.44m)

Lounge/Diner: 26'4 x 15'0 (8.03m x 4.58m)

FIRST FLOOR

Landing

Bedroom 2 : 12'9 x 8'5 (3.89m x 2.57m)

Bedroom 3 : 12'5 x 8'9 (3.79m x 2.67m)

Bedroom 4 : 8'7 x 6'4 (2.62m x 1.93m)

Family Bathroom : 6'3 x 6'3 (1.91m x 1.91m)

SECOND FLOOR

Landing

Bedroom 1 : 23'3 x 13'1 (7.09m x 3.99m)

Dressing Area

En-Suite Shower Room : 6'8 x 6'3 (2.03m x 1.91m)

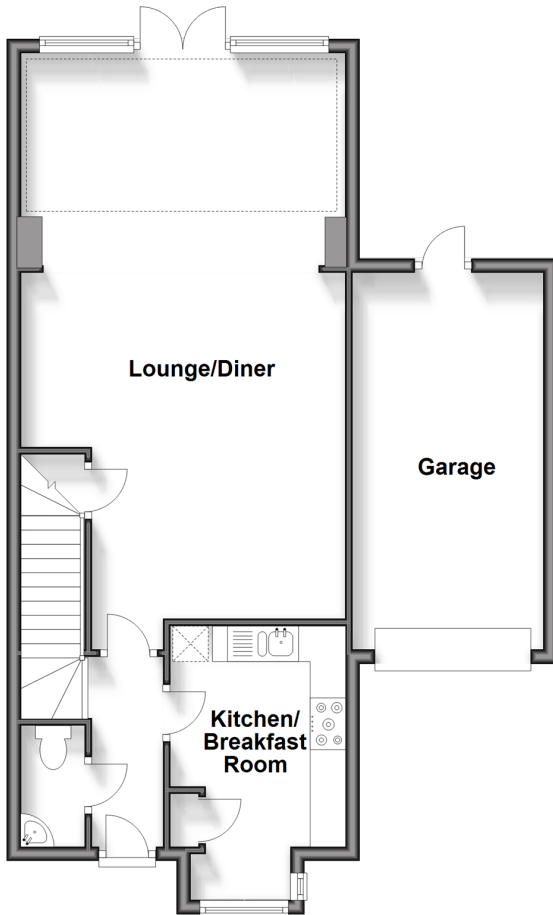
OUTSIDE

Front and Rear Gardens

Garage and Driveway

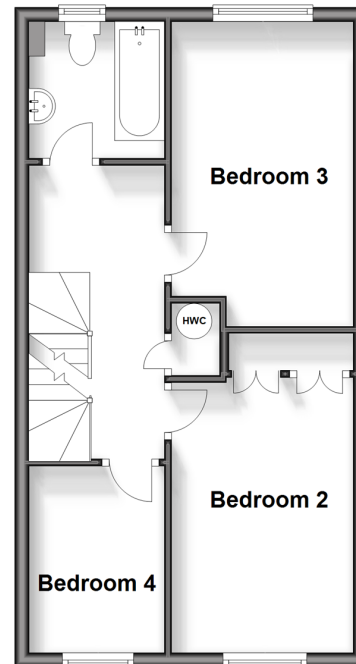
Ground Floor

Approx. 67.0 sq. metres (721.6 sq. feet)



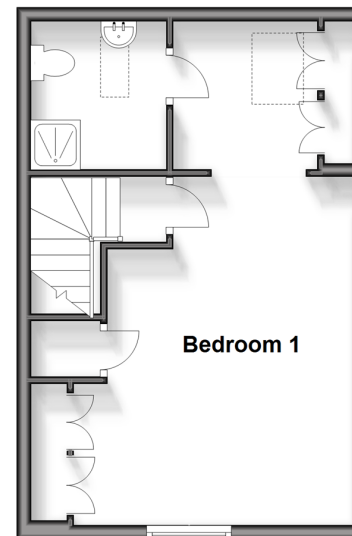
First Floor

Approx. 40.7 sq. metres (438.2 sq. feet)



Second Floor

Approx. 32.5 sq. metres (349.4 sq. feet)





Main features

- Immaculate family home in a quiet development, close to railway links
- Amazing open plan lounge/diner which oozes light and space
- Extremely well kept rear garden
- Family bathroom, en-suite shower room and downstairs cloakroom
- Stunning main bedroom with dressing area which offers you a hotel feel



Nearest Schools

Primary Schools: Valley Invicta Primary 0.3 miles, Snodland CofE Primary 1.0 miles, St Katherine's School 1.0 miles. Secondary Schools: Holmesdale Technology College 0.9 miles, Grange Park School 3.1 miles, Walderslade Girls' School 3.6 miles



Transport Information

Train Stations: Snodland 0.1 miles, Halling 2.2 miles, West Malling 3.1 miles



Address

Cantium Place, Snodland, Kent, ME6



Directions

For directions to this property please contact us.



Wards
Helping you move forwards

Call Snodland Branch 01634 245055 ■ wardsof Kent.co.uk



■ Legal advice should be taken to verify fixtures/fittings, planning, alterations and/or lease details ■ Appliances & services are untested, dimensions are approximate and floor plans are not to scale



13821666/20240820/CG/LK