



Price
£325,000

Freehold

3x  1x  1x 

**Norman Road,
Snodland, Kent, ME6**

OVER 60?

Secure this property
for up to **59% less!**

Wards
Helping you move forwards



Main features

- This is a fantastic size family home with no work to be done
- Great size driveway for 3 cars
- Perfectly situated to local amenities and great travel links
- The ideal kitchen/diner for entertaining and any budding chef
- Enjoy the garden all year round from this handy conservatory

Accommodation

GROUND FLOOR

Entrance Porch

Lounge: 17'5 x 10'9 (5.31m x 3.28m)

Kitchen/Diner: 17'4 x 13'0 (5.29m x 3.97m)

Conservatory: 13'2 x 9'11 (4.02m x 3.02m)

FIRST FLOOR

Landing

Bedroom 1: 11'2 x 10'0 (3.41m x 3.05m)

Bedroom 2: 10'11 x 9'4 (3.33m x 2.85m)

Bedroom 3: 7'10 x 7'8 (2.39m x 2.34m)

Bathroom

Separate Toilet

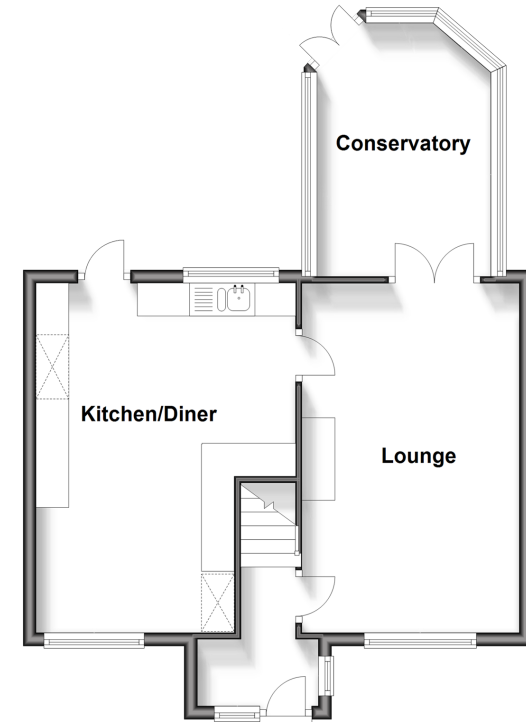
OUTSIDE

Driveway

Rear Garden

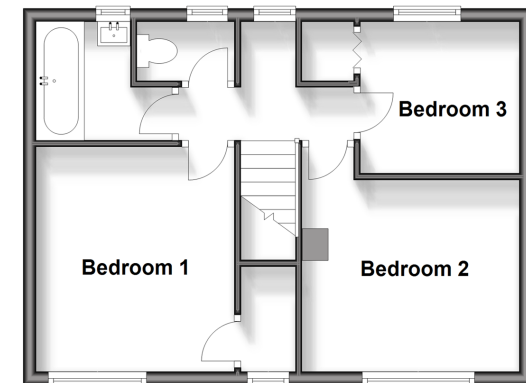
Ground Floor

Approx. 51.1 sq. metres (550.0 sq. feet)



First Floor

Approx. 39.2 sq. metres (422.2 sq. feet)



Call Snodland - 01634 245055 ■ wardsof Kent.co.uk

- Legal advice should be taken to verify fixtures/fittings, planning, alterations and/or lease details
- Appliances & services are untested, dimensions are approximate and floor plans are not to scale
- Through a Homewise Home For Life Plan people aged 60+ can secure this property for up to 59% less, by purchasing a Lifetime Lease.



13821600/20240713/CG/LK