



**Price**

**£300,000**

**Leasehold**

2x  2x  1x 

**Ashfield Close,  
Holborough Lakes, Kent,  
ME6**

**OVER 60?**

Secure this property  
for up to **59% less!**

*Wards*  
Helping you move forwards



## Main features

- Immaculately presented coach house in a stunning location
- Gorgeous lake views from the comfort of your own home
- Easy parking with your very own garage plus allocated parking
- Excellent entertaining space in the lounge/kitchen/diner
- Onsite gym, nursery and lovely walks close by

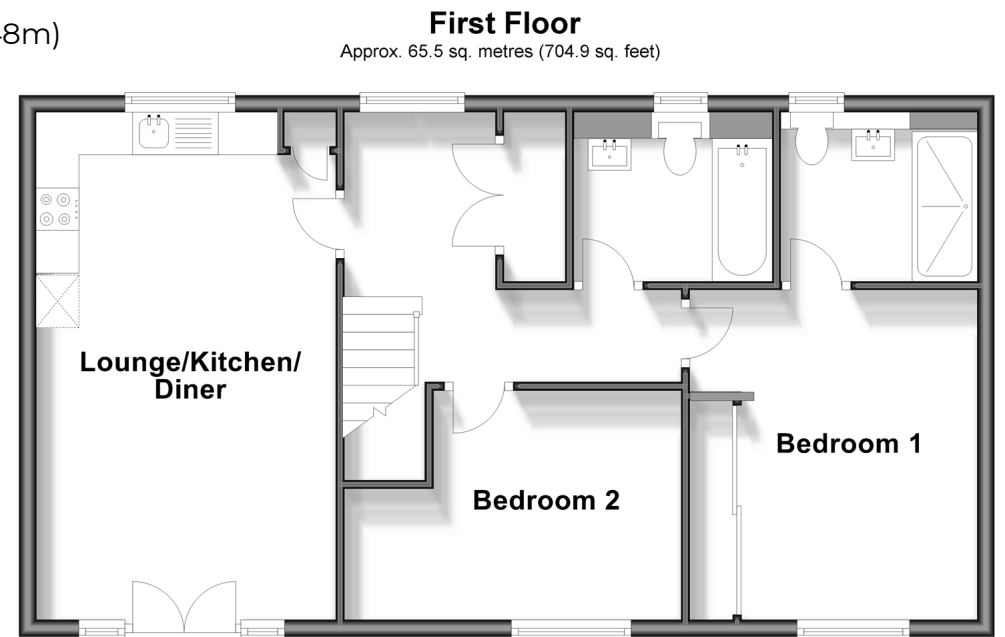
## Accommodation

### FIRST FLOOR

Entrance Hall  
 Lounge/Kitchen/Diner: 19'8 x 11'5 (6.00m x 3.48m)  
 Bedroom 1: 12'8 x 8'11 (3.86m x 2.72m)  
 En-Suite Shower Room  
 Bedroom 2: 12'11 x 9'1 (3.94m x 2.77m)  
 Family Bathroom

### OUTSIDE

Garage  
 Allocated Parking Space



**Call Snodland - 01634 245055 ■ [wardsofKent.co.uk](http://wardsofKent.co.uk)**

■ Legal advice should be taken to verify fixtures/fittings, planning, alterations and/or lease details  
 ■ Through a Homewise Home For Life Plan people aged 60+ can secure this property for up to 59% less, by purchasing a Lifetime Lease.

■ Appliances & services are untested, dimensions are approximate and floor plans are not to scale