



**OVER 60?**

Secure this property  
for up to **59% less!**

**Price**

**£210,000**

**Freehold**

1x  1x  1x 

**Ashbee Close, Snodland,  
Kent, ME6**

*Wards*  
Helping you move forwards





## Main features

- Good size house in a quiet cul-de-sac location
- Private side garden to really enjoy all year round
- Your very own garage and parking in front
- Ready for you to put your own stamp on while you live there
- No forward chain

## Accommodation

### GROUND FLOOR

Lounge Area: 9'6 x 9'1 (2.90m x 2.77m)

Kitchen Area: 12'6 x 6'10 (3.81m x 2.08m)

### FIRST FLOOR

Landing

Bedroom : 11'8 x 9'2 (3.56m x 2.80m)

Bathroom

### OUTSIDE

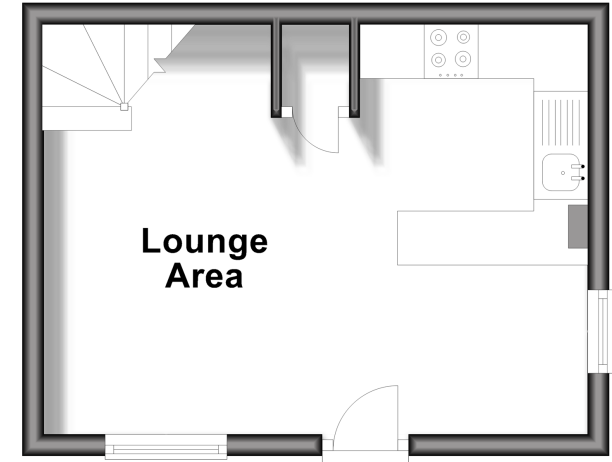
Garage to Rear

Parking Space to Rear

Front and Side Garden

## Ground Floor

Approx. 19.1 sq. metres (205.6 sq. feet)



## First Floor

Approx. 18.8 sq. metres (202.0 sq. feet)



**Call Snodland - 01634 245055 ■ [wardsofkent.co.uk](http://wardsofkent.co.uk)**

- Legal advice should be taken to verify fixtures/fittings, planning, alterations and/or lease details
- Appliances & services are untested, dimensions are approximate and floor plans are not to scale
- Through a Homewise Home For Life Plan people aged 60+ can secure this property for up to 59% less, by purchasing a Lifetime Lease.



13816355/20240429/MM/LK