



Price
£425,000

Freehold

3x  2x  1x 

**Nevill Road, Snodland,
Kent, ME6**

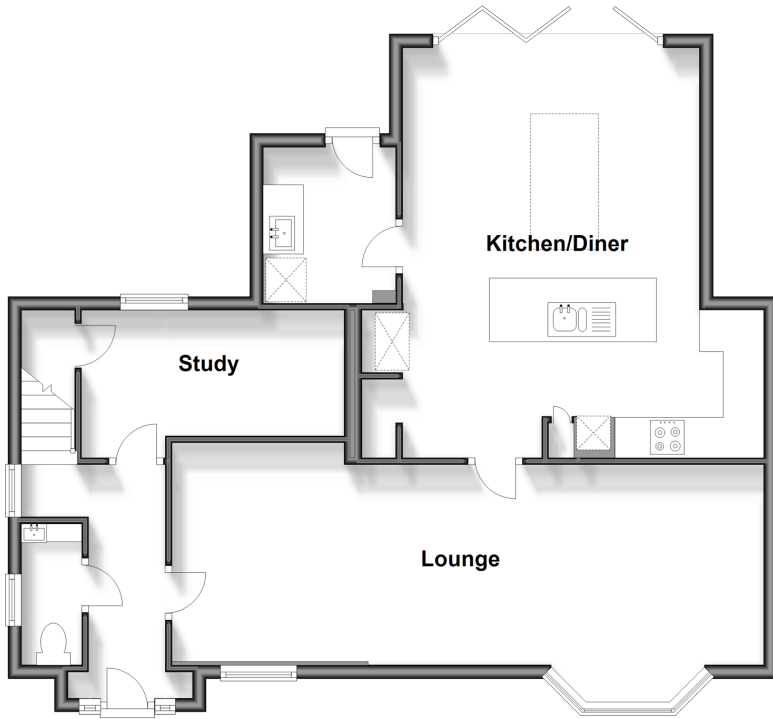
OVER 60?

Secure this property
for up to **59% less!**

Wards
Helping you move forwards

Ground Floor

Approx. 80.6 sq. metres (868.0 sq. feet)



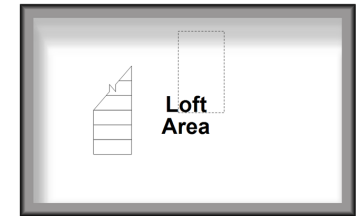
First Floor

Approx. 57.6 sq. metres (620.4 sq. feet)



Loft

Approx. 13.5 sq. metres (145.8 sq. feet)



Accommodation

GROUND FLOOR

Entrance Hall
Cloakroom
Study: 12'2 x 6'1 (3.71m x 1.86m)
Lounge: 28'7 x 9'7 (8.72m x 2.92m)
Kitchen/Diner: 19'5 maximum x 7'2 (5.92m x 2.19m)
plus 14'4 x 12'4 (4.37m x 3.76m)
Utility Room: 7'6 x 6'4 (2.29m x 1.93m)

FIRST FLOOR

Landing
Bedroom 1: 14'0 x 10'11 (4.27m x 3.33m)
En-Suite Shower Room
Bedroom 2: 14'3 x 8'11 (4.35m x 2.72m)
Bedroom 3: 17'3 at widest point (5.26m) narrowing
to 11'11 (3.63m) x 10'7 (3.23m)
Family Bathroom

LOFT

Loft Area: 14'11 x 7'11 (4.55m x 2.41m)

OUT BUILDING

Bar: 15'8 x 12'5 (4.78m x 3.79m)

OUTSIDE

Driveway
Rear Garden



Main features

- A family home with all the space you could possibly want
- Easy parking available here
- Versatile living space to suit your needs
- Fantastic size kitchen/diner plus a separate utility room
- Huge lounge which could possibly be divided plus a great size garden



Nearest Schools

Primary Schools: St Katherine's School 0.2 miles, Snodland CofE Primary 0.4 miles, Valley Invicta Primary 0.8 miles. Secondary Schools: Holmesdale Technology College 0.0 miles, Grange Park School 1.8 miles, Aylesford School - Sports College 2.0 miles

Transport Information

Train Stations: Snodland 0.5 miles, New Hythe 0.9 miles, Aylesford 1.8 miles

Address

Nevill Road, Snodland, Kent, ME6

Directions

For directions to this property please contact us.





Wards
Helping you move forwards

Call Snodland Branch 01634 245055 ■ wardsofkent.co.uk



■ Legal advice should be taken to verify fixtures/fittings, planning, alterations and/or lease details ■ Appliances & services are untested, dimensions are approximate and floor plans are not to scale
■ Through a Homewise Home For Life Plan people aged 60+ can secure this property for up to 59% less, by purchasing a Lifetime Lease.



13821587/20240621/MM/LK