



Price
£260,000

Freehold

3x  1x  1x 

**Bramley Road,
Snodland, Kent, ME6**

OVER 60?

Secure this property
for up to **59% less!**

Wards
Helping you move forwards



Main features

- Beautifully finished home in the centre of Snodland village
- Stunning kitchen, perfect for any budding chef
- Great entertaining space in the open plan lounge and dining area
- All bedrooms are a great size
- Good size garden, perfect for summer parties and kids to play in

Accommodation

GROUND FLOOR

Dining Area: 11'3 x 9'10 (3.43m x 3.00m)

Lounge: 12'10 x 11'3 (3.91m x 3.43m)

Kitchen: 8'2 x 7'8 (2.49m x 2.34m)

Bathroom

FIRST FLOOR

Landing

Bedroom 2: 11'4 x 9'11 (3.46m x 3.02m)

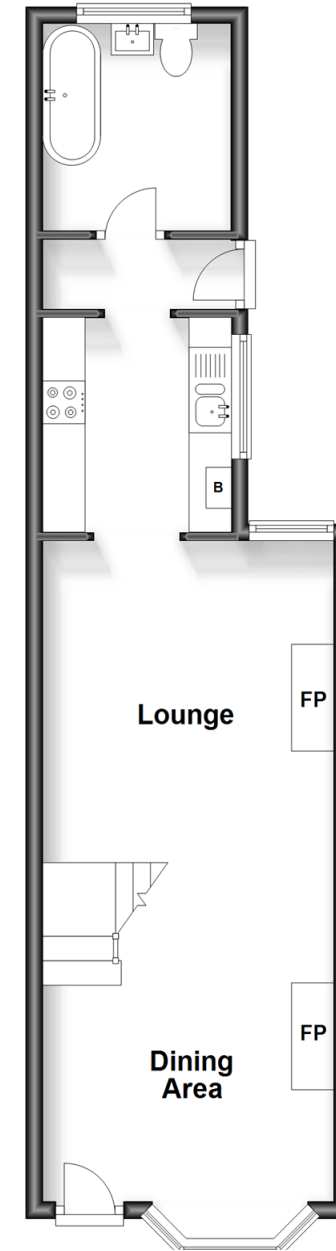
Bedroom 1: 12'2 x 11'4 (3.71m x 3.46m)

Bedroom 3: 8'2 x 7'11 (2.49m x 2.41m)

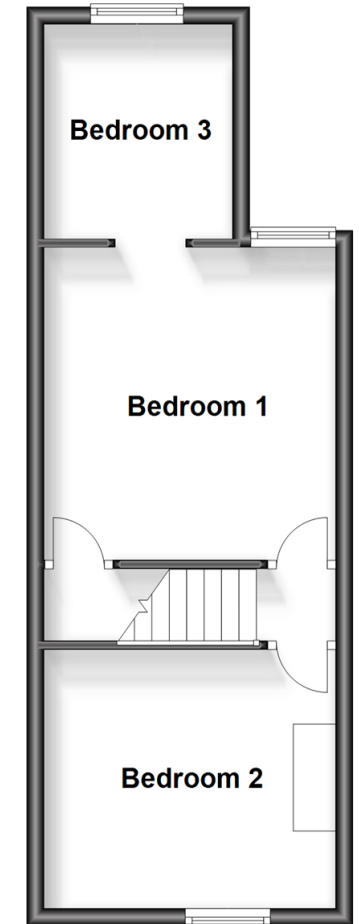
OUTSIDE

Front and Rear Gardens

Ground Floor
Approx. 40.2 sq. metres (433.2 sq. feet)



First Floor
Approx. 32.4 sq. metres (348.5 sq. feet)



Call Snodland - 01634 245055 ■ wardsof Kent.co.uk

- Legal advice should be taken to verify fixtures/fittings, planning, alterations and/or lease details
- Appliances & services are untested, dimensions are approximate and floor plans are not to scale
- Through a Homewise Home For Life Plan people aged 60+ can secure this property for up to 59% less, by purchasing a Lifetime Lease.



13819249/20240807/MM/LK