



**Price**  
**£400,000**

**Freehold**

3x  2x  1x 

**Amisse Drive, Snodland,  
Kent, ME6**

**OVER 60?**

Secure this property  
for up to **59% less!**

*Wards*  
Helping you move forwards



## Main features

- Stunning home on the prestigious Holborough Lakes development
- Amazing kitchen/diner which is perfect for entertaining family
- No worries with parking as you have a carport and driveway
- Handy cloakroom, en-suite shower room and bathroom
- Ready to move straight into

## Accommodation

### GROUND FLOOR

Entrance Hall

Cloakroom

Lounge: 21'10 x 10'8 (6.66m x 3.25m)

Kitchen/Diner: (L-shaped) 19'7 x 18'2 (5.97m x 5.54m) plus 9'3 x 8'2 (2.82m x 2.49m)

### FIRST FLOOR

Landing

Bedroom 1: 13'3 x 10'5 (4.04m x 3.18m)

En-Suite Shower Room

Bedroom 2: 10'11 x 8'5 (3.33m x 2.57m)

Bedroom 3: 8'5 x 6'11 (2.57m x 2.11m)

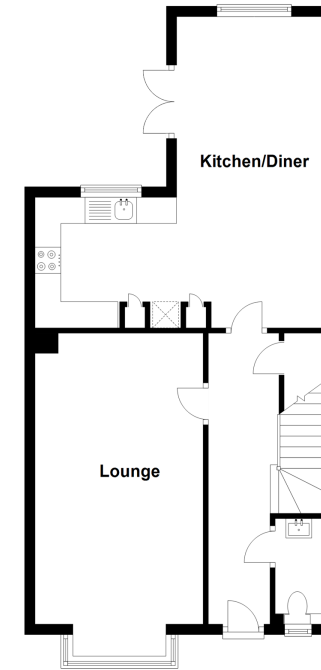
Bathroom

### OUTSIDE

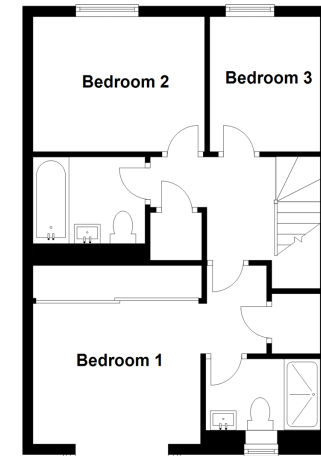
Front and Rear Gardens

Car port and Driveway

**Ground Floor**  
Approx. 55.7 sq. metres (599.6 sq. feet)



**First Floor**  
Approx. 45.9 sq. metres (494.5 sq. feet)



**Call Snodland - 01634 245055 ■ [wardsokent.co.uk](http://wardsokent.co.uk)**

- Legal advice should be taken to verify fixtures/fittings, planning, alterations and/or lease details
- Appliances & services are untested, dimensions are approximate and floor plans are not to scale
- Through a Homewise Home For Life Plan people aged 60+ can secure this property for up to 59% less, by purchasing a Lifetime Lease.



13821140/20240608/CG/LK