



Guide Price
£240,000

Freehold

2x  1x  2x 

**Crown Road,
Sittingbourne, Kent,
ME10**

OVER 60?

Secure this property
for up to **59% less!**

Wards
Helping you move forwards



Main features

- Off road parking to the rear
- An end of terrace house with double bedrooms
- Character mixed with modern aspects
- Close to all local amenities including, schools, shops and mainline train station
- Neutral condition throughout the property offering perfect start to add your own stamp on

Accommodation

SPLIT LEVEL GROUND FLOOR

Dining Room: 14'3 x 11'9 (4.35m x 3.58m)
Lounge: 11'9 x 11'1 (3.58m x 3.38m)
Kitchen: 12'1 x 11'1 (3.69m x 3.38m)
Cloakroom

SPLIT LEVEL FIRST FLOOR

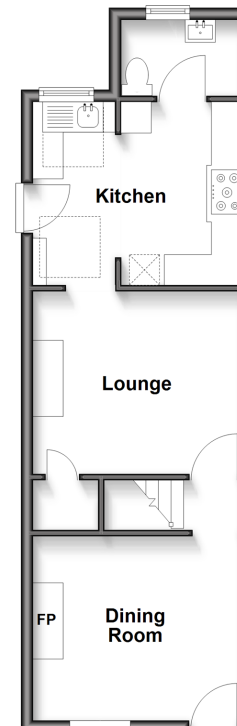
Landing
Bedroom 1: 11'9 x 11'0 (3.58m x 3.36m)
Bedroom 2: 11'9 x 10'9 (3.58m x 3.28m)
Bathroom

OUTSIDE

Rear Garden
Off Road Parking

Split Level Ground Floor

Approx. 37.7 sq. metres (406.2 sq. feet)



Split Level First Floor

Approx. 30.5 sq. metres (328.5 sq. feet)



Call Sittingbourne - 01795 427272 ■ wardsofkent.co.uk

■ Legal advice should be taken to verify fixtures/fittings, planning, alterations and/or lease details
■ Through a Homewise Home For Life Plan people aged 60+ can secure this property for up to 59% less, by purchasing a Lifetime Lease.

■ Appliances & services are untested, dimensions are approximate and floor plans are not to scale



11738592/20250614/KC/MC1