



**Price**  
**£325,000**

**Freehold**

3x  1x  2x 

**Wises Lane,  
Sittingbourne, Kent,  
ME10**

**OVER 60?**

Secure this property  
for up to **59% less!**

*Wards*  
Helping you move forwards





## Main features

- Semi-detached house with large rear garden
- Driveway for multiple cars
- Property boasts many features, but perfect to add your own stamp
- Ideal location for a growing family
- In a good school catchment area
- Chain free

## Accommodation

### SPLIT LEVEL GROUND FLOOR

Hallway  
 Lounge: 14'4 x 12'3 (4.37m x 3.74m)  
 Dining Room: 12'9 x 11'5 (3.89m x 3.48m)  
 Kitchen: 9'8 x 9'8 (2.95m x 2.95m)  
 Wet Room

### FIRST FLOOR

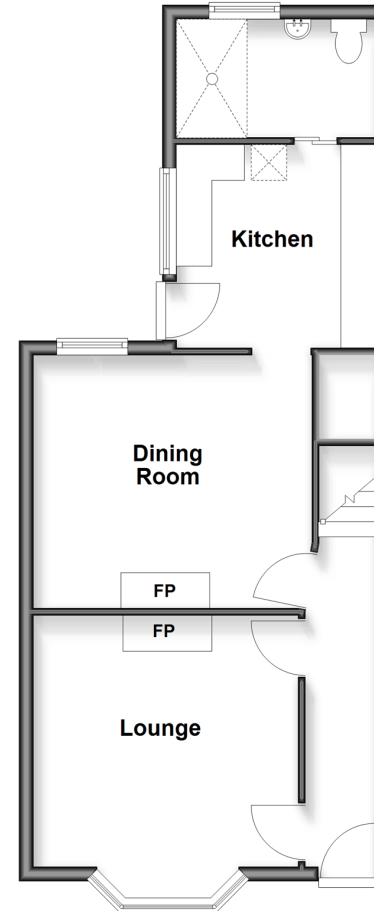
Landing  
 Bedroom 1: 15'6 x 11'9 (4.73m x 3.58m)  
 Bedroom 2: 11'8 x 10'3 (3.56m x 3.13m)  
 Bedroom 3: 9'6 x 9'5 (2.90m x 2.87m)

### OUTSIDE

Driveway  
 Rear Garden

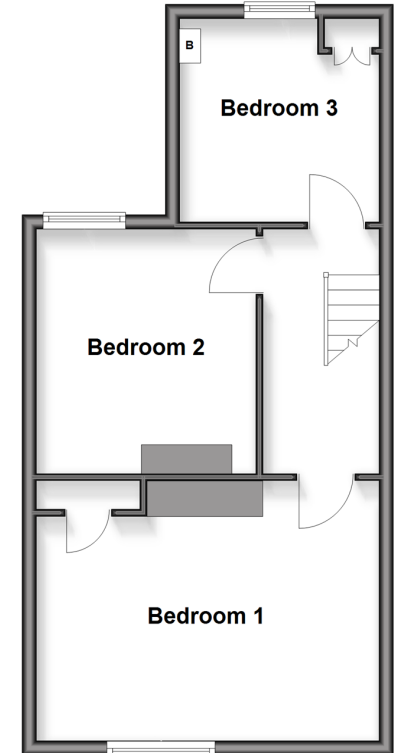
### Split Level Ground Floor

Approx. 48.0 sq. metres (517.1 sq. feet)



### First Floor

Approx. 42.8 sq. metres (461.2 sq. feet)



**Call Sittingbourne - 01795 427272 ■ [wardsof Kent.co.uk](http://wardsof Kent.co.uk)**

- Legal advice should be taken to verify fixtures/fittings, planning, alterations and/or lease details
- Appliances & services are untested, dimensions are approximate and floor plans are not to scale
- Through a Homewise Home For Life Plan people aged 60+ can secure this property for up to 50% less, by purchasing a Lifetime Lease.



11738862/20251016/MC1/MC1