



OVER 60?

Secure this property
for up to **59% less!**

Price

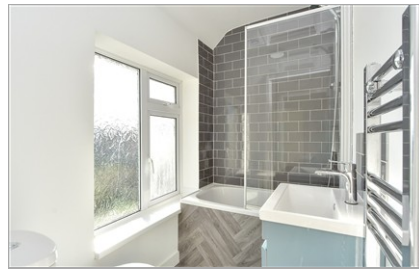
£350,000

Freehold

3x  2x  2x 

**Keycol Hill, Bobbing,
Sittingbourne, Kent,
ME9 8ND**

Wards
Helping you move forwards



Main features

- Semi-detached house with large driveway for multiple cars
- A fantastic opportunity for families and investors alike
- Convenient location with commuter links to the A249, M2 and M20
- Newly renovated throughout; move-in ready
- Chain free

Accommodation

GROUND FLOOR

Entrance Hall
Lounge: 12'0 x 12'0 (3.66m x 3.66m)
Cloakroom
Shower Room
Kitchen: 9'6 x 6'4 (2.90m x 1.93m)
Dining Room/Study: 10'0 x 9'0 (3.05m x 2.75m)

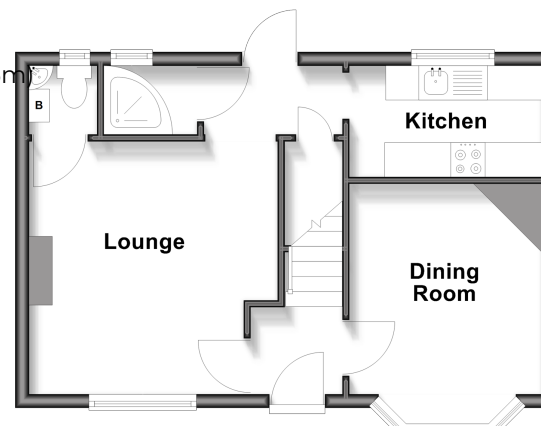
FIRST FLOOR

Landing
Bedroom 1: 12'1 x 9'5 (3.69m x 2.87m)
Bedroom 2: 10'9 x 8'1 (3.28m x 2.47m)
Bedroom 3: 8'1 x 6'0 (2.47m x 1.83m)
Bathroom

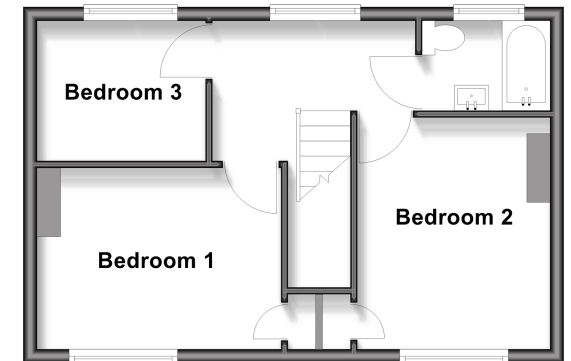
OUTSIDE

Driveway
Rear Garden

Ground Floor
Approx. 36.0 sq. metres (387.8 sq. feet)



First Floor
Approx. 35.8 sq. metres (385.1 sq. feet)



Call Sittingbourne - 01795 427272 ■ wardsofkent.co.uk

■ Legal advice should be taken to verify fixtures/fittings, planning, alterations and/or lease details
■ Through a Homewise Home For Life Plan people aged 60+ can secure this property for up to 50% less, by purchasing a Lifetime Lease

■ Appliances & services are untested, dimensions are approximate and floor plans are not to scale