



Guide Price
£350,000

Freehold

4x  1x  1x 

**Fallowfield,
Sittingbourne, Kent,
ME10**

OVER 60?

Secure this property
for up to **59% less!**

Wards
Helping you move forwards



Main features

- Link-detached house in a cul-de-sac position
- Garage and off-road parking
- Opportunity to update and make your own
- Close to town centre, schools and amenities
- Excellent transport links including nearby train station

Accommodation

GROUND FLOOR

Entrance Hall

Lounge: 22'4 x 11'3 (6.81m x 3.43m)

Dining Room: 11'4 x 9'2 (3.46m x 2.80m)

Kitchen: 11'6 x 11'3 (3.51m x 3.43m)

Cloakroom

FIRST FLOOR

Landing

Bedroom 1: 11'5 x 11'4 (3.48m x 3.46m)

Bedroom 2: 11'9 x 8'3 (3.58m x 2.52m)

Bedroom 3: 11'8 x 10'8 (3.56m x 3.25m)

Bedroom 4: 10'8 x 6'11 (3.25m x 2.11m)

Bathroom

OUTSIDE

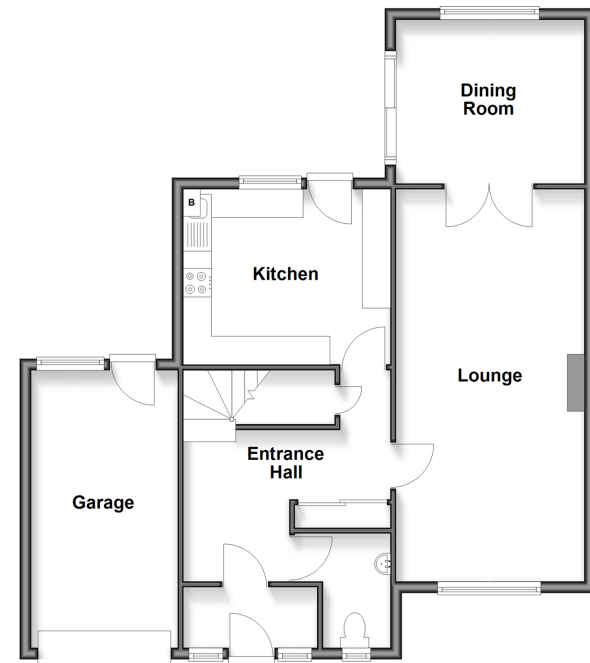
Front Garden

Off-Road Parking

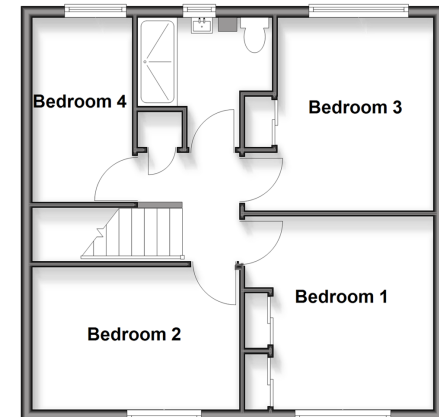
Garage

Rear Garden

Ground Floor
Approx. 76.3 sq. metres (821.1 sq. feet)



First Floor
Approx. 48.9 sq. metres (526.8 sq. feet)



Call Sittingbourne - 01795 427272 ■ wardsof Kent.co.uk

- Legal advice should be taken to verify fixtures/fittings, planning, alterations and/or lease details
- Appliances & services are untested, dimensions are approximate and floor plans are not to scale
- Through a Homewise Home For Life Plan people aged 60+ can secure this property for up to 50% less, by purchasing a Lifetime Lease



11738842/20260103/JS/CK