



Guide Price
£475,000

Freehold

4x  2x  2x 

**Lorimar Court,
Sittingbourne, Kent,
ME10**

OVER 60?

Secure this property
for up to **59% less!**

Wards
Helping you move forwards



Main features

- Quiet cul-de-sac position
- Move in ready with neutral decor throughout
- Perfect to add your own stamp
- Ideal for a growing family with local schools, shops and amenities
- Chain free

Accommodation

GROUND FLOOR

Entrance Hall
Cloakroom
Lounge: 18'7 x 11'1 (5.67m x 3.38m)
Dining Room: 12'6 x 8'0 (3.81m x 2.44m)
Kitchen: 9'8 x 7'1 (2.95m x 2.16m)
Orangery: 13'3 x 9'7 (4.04m x 2.92m)

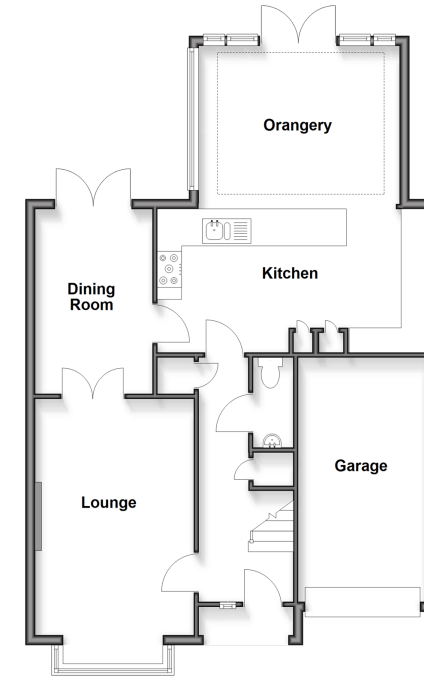
FIRST FLOOR

Landing
Bedroom 1: 15'1 x 13'7 (4.60m x 4.14m)
En-Suite Shower Room
Bedroom 2: 16'0 x 9'6 (4.88m x 2.90m)
Bedroom 3: 10'5 x 10'1 (3.18m x 3.08m)
Bedroom 4: 10'4 x 8'6 (3.15m x 2.59m)
Bathroom

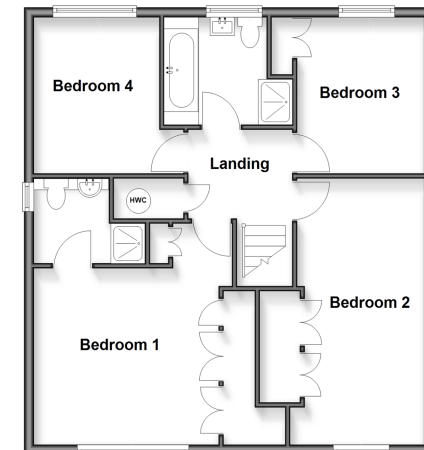
OUTSIDE

Front Garden
Garage & Parking
Rear Garden

Ground Floor
Approx. 81.7 sq. metres (879.0 sq. feet)



First Floor
Approx. 69.2 sq. metres (744.7 sq. feet)



Call Sittingbourne - 01795 427272 ■ wardsof Kent.co.uk

- Legal advice should be taken to verify fixtures/fittings, planning, alterations and/or lease details
- Appliances & services are untested, dimensions are approximate and floor plans are not to scale
- Through a Homewise Home For Life Plan people aged 60+ can secure this property for up to 50% less, by purchasing a Lifetime Lease.



11738843/20250913/JS/MC1