



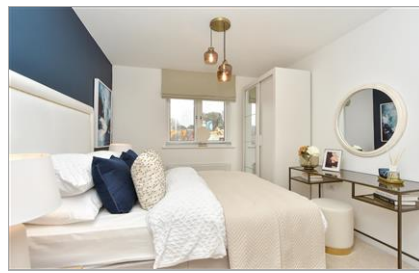
Price
£425,000

Freehold

3x  2x  1x 

**The Dendy, Chestnut
Grove, Borden,
Sittingbourne, Kent,
ME9**

Wards
Helping you move forwards



Main features

- **Attractive 3-bedroom detached new build house**
- **Contemporary kitchen/diner with fitted cabinetry and integrated appliances**
- **Separate living area with neutral decor**
- **Sumptuous bedrooms designed for relaxation**
- **Roca white bathroom suites with chrome fittings**
- **10-year NHBC warranty & 2-years Abbey Homes Customer Care service**
- **Landscaped rear garden**

Accommodation

GROUND FLOOR

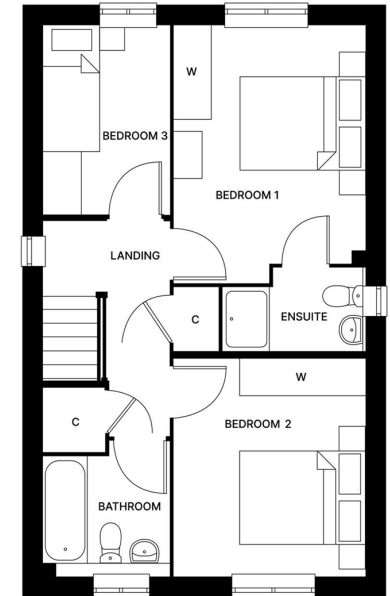
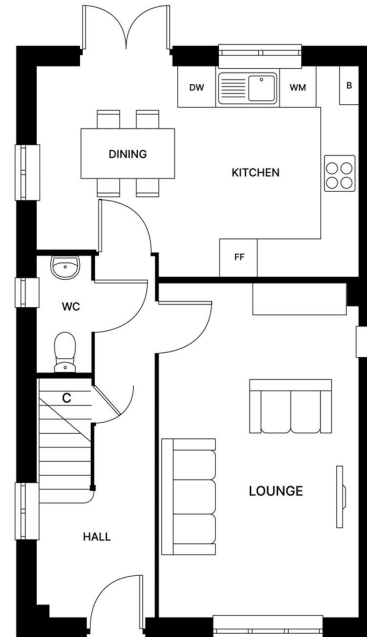
Entrance Hall
Lounge: 17'6 x 10'6 (5.34m x 3.20m)
Kitchen/Diner: 16'11 x 11'0 (5.16m x 3.36m)
Cloakroom

FIRST FLOOR

Landing
Bedroom 1: 13'6 x 10'0 (4.12m x 3.05m)
En-suite Shower Room
Bedroom 2: 11'6 x 10'0 (3.51m x 3.05m)
Bedroom 3: 9'11 x 6'8 (3.02m x 2.03m)
Bathroom

OUTSIDE

Front Garden
Rear Garden
Allocated Car Port
Off-Road Parking



Call Sittingbourne - 01795 427272 ■ wardsof Kent.co.uk

- If buying to let, the energy rating will need to be improved to at least 'E' rating before you can let the property
- Appliances & services are untested, dimensions are approximate and floor plans are not to scale

■ Legal advice should be taken to verify fixtures/fittings, planning, alterations and/or lease details



11738744/20250605/KC/MC1