



Guide Price
£170,000

Freehold

2x  1x  1x 

**Shortlands Road,
Sittingbourne, Kent,
ME10**

OVER 60?

Secure this property
for up to **59% less!**

Wards
Helping you move forwards



Main features

- No onward chain
- Close to mainline station
- In need of some renovation
- Easy to add your own stamp to this property with easy access
- Perfect investment opportunity for buy to let or first time buyers

Accommodation

GROUND FLOOR

Porch

Lounge: 13'3 x 9'9 (4.04m x 2.97m)

Kitchen/Diner: 13'2 x 9'6 (4.02m x 2.90m)

Bathroom

FIRST FLOOR

Landing

Bedroom 1: 13'5 x 9'8 (4.09m x 2.95m)

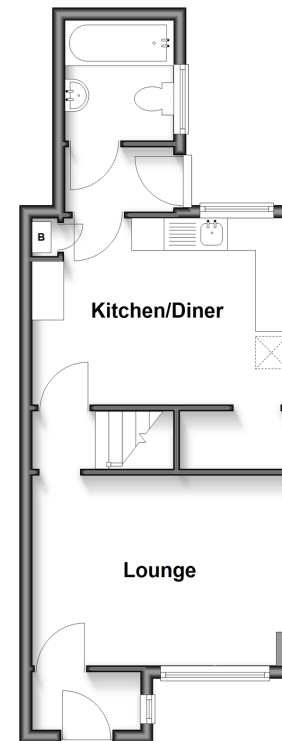
Bedroom 2: 12'2 x 9'9 (3.71m x 2.97m)

OUTSIDE

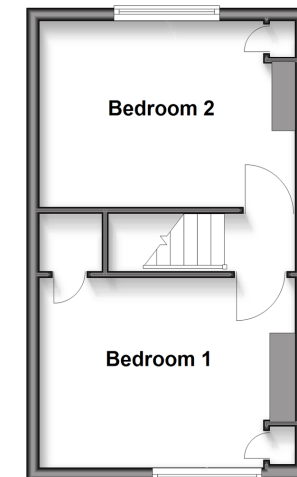
Small Front Courtyard

Rear Garden

Ground Floor
Approx. 34.9 sq. metres (375.2 sq. feet)



First Floor
Approx. 27.9 sq. metres (300.4 sq. feet)



Call Sittingbourne - 01795 427272 ■ wardsofkent.co.uk

■ Legal advice should be taken to verify fixtures/fittings, planning, alterations and/or lease details
■ Through a Homewise Home For Life Plan people aged 60+ can secure this property for up to 59% less, by purchasing a Lifetime Lease

■ Appliances & services are untested, dimensions are approximate and floor plans are not to scale



11738009/20260107/MC1/MC1