

OVER 60?

Secure this property
for up to **59% less!**



Price
£725,000
Freehold

4x  2x  3x 

Draysfield, Wormshill, Sittingbourne, Kent,
ME9

Wards
Helping you move forwards



Main features

- In great need of modernisation
- Large driveway
- Double garage
- Incredible rural aspect and just a short drive to local amenities
- Perfect for someone looking for their next project or family home

Accommodation

GROUND FLOOR

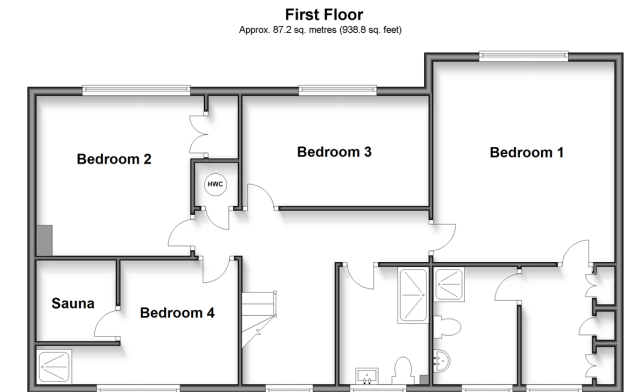
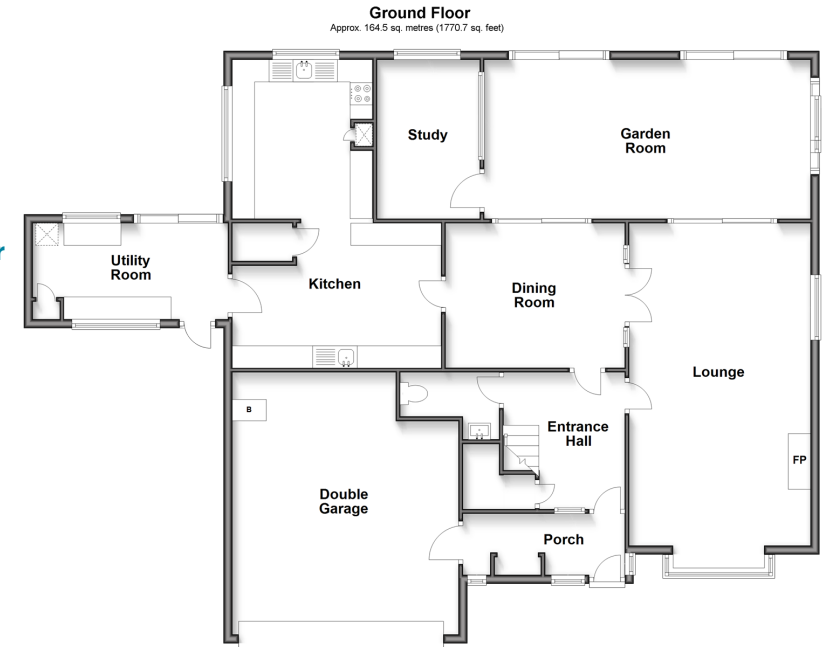
Porch
Entrance Hall
Cloakroom
Lounge: 26'7 x 13'9 (8.11m x 4.19m)
Dining Room: 13'2 x 10'4 (4.02m x 3.15m)
Garden Room: 25'4 x 11'5 (7.73m x 3.48m)
Study: 11'4 x 8'3 (3.46m x 2.52m)
Kitchen: 11'8 x 11'3 (3.56m x 3.43m)
Breakfast Area: 15'4 x 10'1 (4.68m x 3.08m)
Utility Room: 15'1 x 8'3 (4.60m x 2.52m)

FIRST FLOOR

Landing
Bedroom 1: 15'2 x 13'9 (4.63m x 4.19m)
Dressing Room: 9'3 x 4'6 (2.82m x 1.37m)
En-Suite Shower Room
Bedroom 2: 13'4 x 10'9 (4.07m x 3.28m)
Bedroom 3: 15'4 x 9'7 (4.68m x 2.92m)
Bedroom 4: 13'3 x 7'9 (4.04m x 2.36m)
Shower Room
Sauna

OUTSIDE

Front Garden
Double Garage
Off Road Parking
Rear Garden



Call Sittingbourne - 01795 427272 ■ wardsofKent.co.uk

- Legal advice should be taken to verify fixtures/fittings, planning, alterations and/or lease details
- Appliances & services are untested, dimensions are approximate and floor plans are not to scale
- Through a Homewise Home For Life Plan people aged 60+ can secure this property for up to 59% less, by purchasing a Lifetime Lease.



11738609/20250218/KC/TB