



Guide Price
£475,000

Freehold

4x  1x  1x 

**Park Avenue,
Sittingbourne, Kent,
ME10**

OVER 60?

Secure this property
for up to **59% less!**

Wards
Helping you move forwards



Main features

- **Generous sized bedrooms with plenty of light, each room provides a tranquil space for rest and relaxation**
- **A well appointed, contemporary kitchen, perfect for everyday family meals and entertaining guests**
- **Enjoy a large living area with warm, homely atmosphere and seamless flow throughout**
- **Off street parking with ample space for multiple vehicles**
- **Close to King George's Park for family walk**

Accommodation

GROUND FLOOR

Entrance Hall
Cloakroom
Lounge : 13'9 x 11'9 (4.19m x 3.58m)
Kitchen/Diner/Family Area: 24'1 x 17'4 (7.35m x 5.29m)

FIRST FLOOR

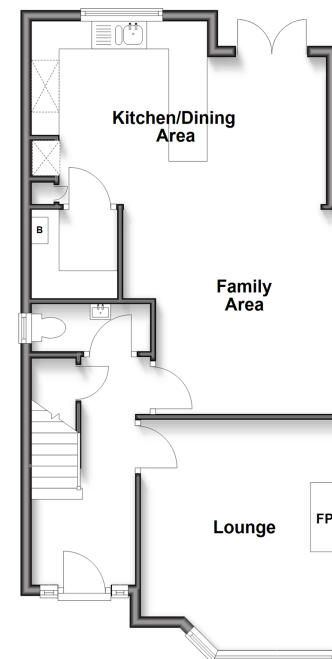
Landing
Bedroom 1: 13'8 x 10'6 (4.17m x 3.20m)
Bedroom 2: 12'1 x 8'0 (3.69m x 2.44m)
Bedroom 3: 10'8 x 10'1 (3.25m x 3.08m)
Bedroom 4: 7'7 x 6'9 (2.31m x 2.06m)
Bathroom

OUTSIDE

Off Road Parking
Rear Garden

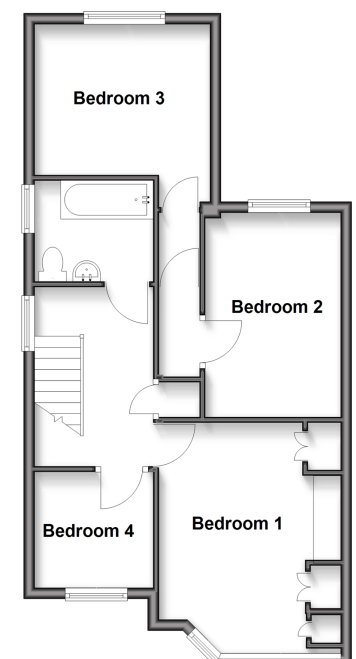
Ground Floor

Approx. 58.2 sq. metres (626.5 sq. feet)



First Floor

Approx. 52.1 sq. metres (560.4 sq. feet)



Call Sittingbourne - 01795 427272 ■ wardsofkent.co.uk

■ Legal advice should be taken to verify fixtures/fittings, planning, alterations and/or lease details
■ Through a Homewise Home For Life Plan people aged 60+ can secure this property for up to 59% less, by purchasing a Lifetime Lease.

■ Appliances & services are untested, dimensions are approximate and floor plans are not to scale