



Price
£255,000

Freehold

2x  1x  1x 

**Watsons Hill,
Sittingbourne, Kent,
ME10**

OVER 60?

Secure this property
for up to **59% less!**

Wards
Helping you move forwards



Main features

- Set in a quiet cul-de-sac
- Neutral decor throughout with room to add your own touches on this home
- Perfect first time buyers property or buy to let investment opportunity
- A must view!
- Close to town and mainline train links

Accommodation

GROUND FLOOR

Porch
 Entrance Hall
 Lounge: 14'0 x 12'1 (4.27m x 3.69m)
 Kitchen: 11'7 x 8'0 (3.53m x 2.44m)

FIRST FLOOR

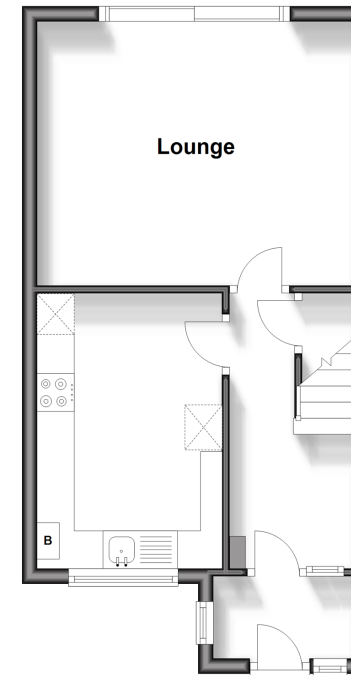
Landing
 Bedroom 1: 13'9 x 10'2 (4.19m x 3.10m)
 Bedroom 2: 11'6 x 7'6 (3.51m x 2.29m)
 Bathroom

OUTSIDE

Front Garden
 Rear Garden

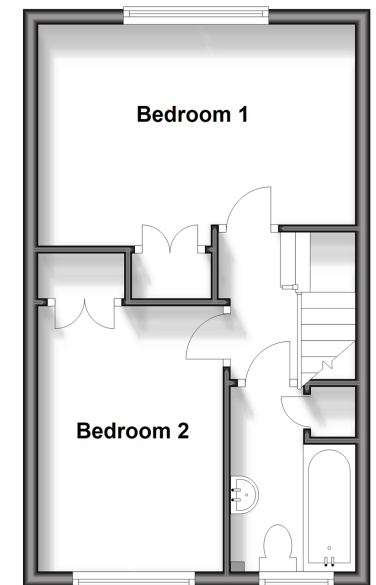
Ground Floor

Approx. 33.0 sq. metres (355.7 sq. feet)



First Floor

Approx. 30.8 sq. metres (331.5 sq. feet)



Call Sittingbourne - 01795 427272 ■ wardsofken.co.uk

- Legal advice should be taken to verify fixtures/fittings, planning, alterations and/or lease details
- Appliances & services are untested, dimensions are approximate and floor plans are not to scale
- Through a Homewise Home For Life Plan people aged 60+ can secure this property for up to 59% less, by purchasing a Lifetime Lease.



11738528/20241130/KC/MC1