



OVER 60?

Secure this property
for up to **59% less!**

Guide Price
£480,000

Freehold

4x  2x  2x 

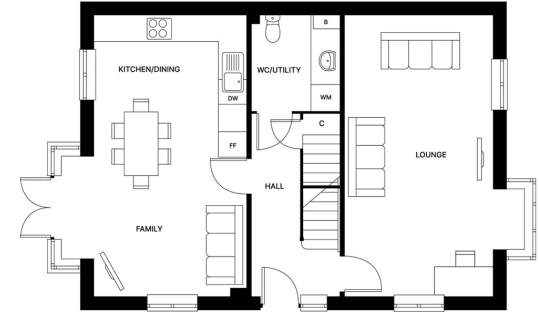
**The Fernwood, Chestnut
Grove, Borden,
Sittingbourne, Kent,
ME9**

Wards
Helping you move forwards



Main features

- Contemporary kitchen/diner/family room with fitted cabinetry and integrated appliances and French doors leading to the rear garden
- Spacious separate lounge with bay window
- Sumptuous bedrooms designed for relaxation



Accommodation

GROUND FLOOR

Hallway

Kitchen/Dining/Family Room: 12'7 x 11'9 (3.84m x 3.58m)

Lounge: 13'11 x 12'7 (4.24m x 3.84m)

WC / Utility Room: 7'4 x 6'9 (2.24m x 2.06m)

FIRST FLOOR

Landing

Bedroom 1: 15'6 x 12'2 (4.73m x 3.71m)

En suite

Bedroom 2: 12'2 x 11'6 (3.71m x 3.51m)

Bedroom 3: 11'2 x 9'3 (3.41m x 2.82m)

Study: 9'3 x 8'2 (2.82m x 2.49m)

Bathroom



OUTSIDE

Front Garden

Rear Garden

Car Port & Off Road Parking

Call Sittingbourne - 01795 427272 ■ wardsofkent.co.uk

- If buying to let, the energy rating will need to be improved to at least 'E' rating before you can let the property
- Legal advice should be taken to verify fixtures/fittings, planning, alterations and/or lease details
- Appliances & services are untested, dimensions are approximate and floor plans are not to scale
- Through a Homewise Home For Life Plan people aged 60+ can secure this property for up to 50% less, by purchasing a Lifetime Lease.



11738541/20251007/JS/TB