



Price
£325,000

Freehold

4x  2x  1x 

**Clifford Crescent,
Sittingbourne, Kent,
ME10**

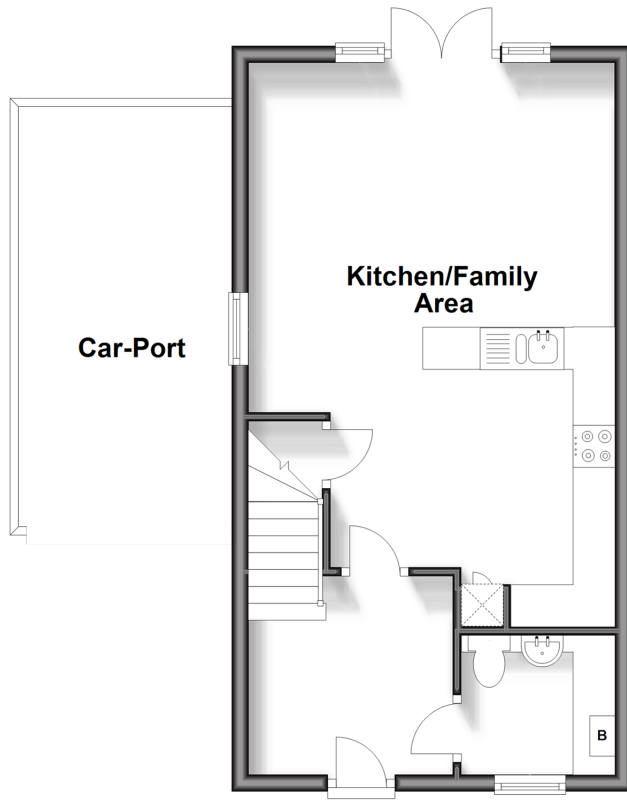
OVER 60?

Secure this property
for up to **59% less!**

Wards
Helping you move forwards

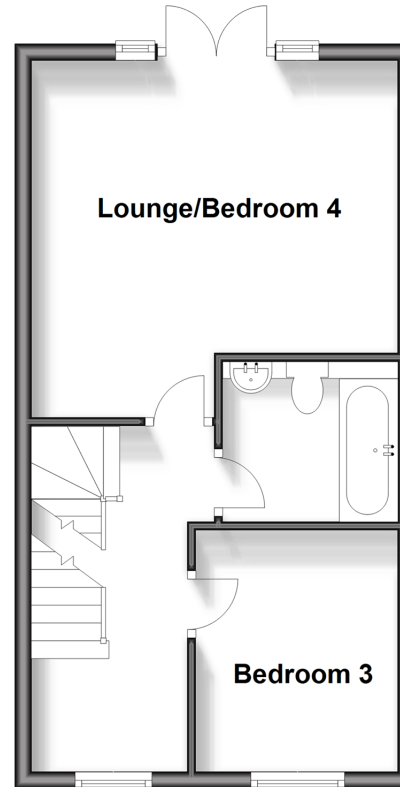
Ground Floor

Approx. 37.0 sq. metres (398.6 sq. feet)



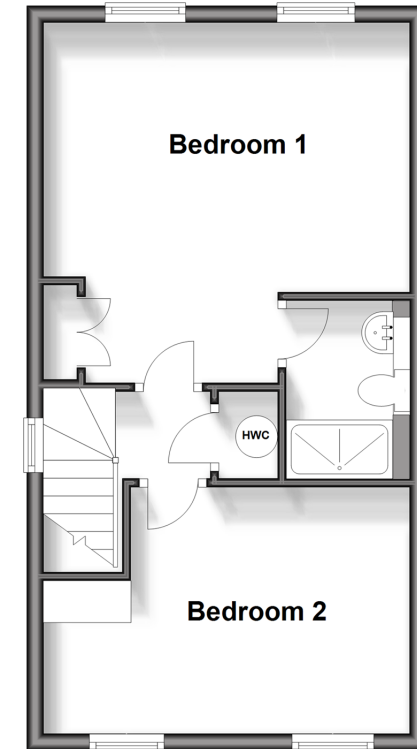
First Floor

Approx. 37.0 sq. metres (398.6 sq. feet)



Second Floor

Approx. 37.0 sq. metres (398.6 sq. feet)



Accommodation

GROUND FLOOR

Entrance Hall
Kitchen/Family Area: 21'7 x 14'3 (6.58m x 4.35m)
Utility/Cloakroom: 6'2 x 6'0 (1.88m x 1.83m)

FIRST FLOOR

Landing
Lounge/Bedroom 4: 14'7 x 14'3 (4.45m x 4.35m)
Bathroom
Bedroom 3: 9'5 x 7'9 (2.87m x 2.36m)

SECOND FLOOR

Landing
Bedroom 1: 14'4 x 14'0 (4.37m x 4.27m)
En-Suite Shower Room
Bedroom 2: 14'3 x 9'4 (4.35m x 2.85m)

OUTSIDE

Front Garden
Off Road Parking
Car-Port
Rear Garden



Main features

- Beautifully presented with neutral decor throughout
- En-suite shower room to bedroom 1
- Driveway and carport for ample parking
- Spacious throughout with room to entertain friends and family
- Set in a quiet residential area, close to local schools, shops and amenities



Nearest Schools

Primary Schools: Lansdowne Primary 0.2 miles, Murston Junior School 0.4 miles, Bapchild and Tonge C of E Primary 0.5 miles
Secondary Schools: Meadowfield School 0.5 miles, Sittingbourne Community College 0.5 miles



Transport Information

Train Stations: Sittingbourne 1.2 miles, Kemsley 1.8 miles, Teynham 1.9 miles



Address

Clifford Crescent, Sittingbourne, Kent, ME10



Directions

For directions to this property please contact us.





Wards
Helping you move forwards

Call Sittingbourne Branch 01795 427272 ■ wardsofkent.co.uk



- Legal advice should be taken to verify fixtures/fittings, planning, alterations and/or lease details
- Appliances & services are untested, dimensions are approximate and floor plans are not to scale
- Through a Homewise Home For Life Plan people aged 60+ can secure this property for up to 59% less, by purchasing a Lifetime Lease.



11738447/20241030/MC1/TB