



Price
£220,000

Freehold

3x  1x  2x 

**Rock Road,
Sittingbourne, Kent,
ME10**

OVER 60?

Secure this property
for up to **59% less!**

Wards
Helping you move forwards



Main features

- Perfect property for a first time buyer or buy to let investor
- Easy maintainable outside space
- Close to town and mainline train station
- Schools in close proximity offering good catchment area
- No onward chain

Accommodation

SPLIT LEVEL GROUND FLOOR

Entrance Hall

Lounge: 15'5 x 10'3 (4.70m x 3.13m)

Dining Area: 12'5 x 10'9 (3.79m x 3.28m)

Kitchen: 12'1 x 7'8 (3.69m x 2.34m)

Shower Room

FIRST FLOOR

Landing

Bedroom 1: 13'4 x 12'4 (4.07m x 3.76m)

Bedroom 2: 12'4 x 8'3 (3.76m x 2.52m)

Bedroom 3: 11'9 x 7'9 (3.58m x 2.36m)

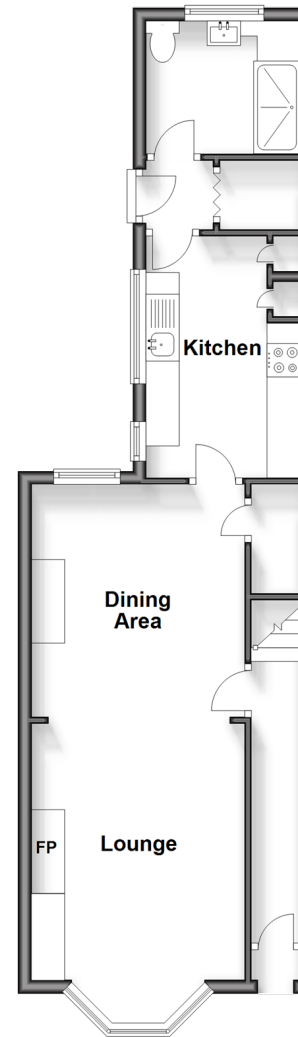
OUTSIDE

Front Garden

Rear Garden

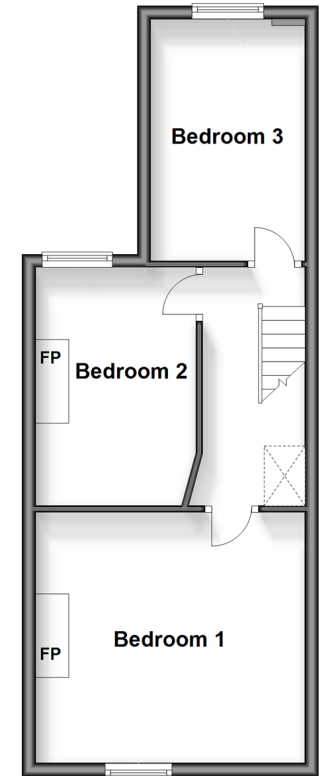
Split Level Ground Floor

Approx. 46.3 sq. metres (497.9 sq. feet)



First Floor

Approx. 38.6 sq. metres (415.0 sq. feet)



Call Sittingbourne - 01795 427272 ■ wardsof Kent.co.uk

- Legal advice should be taken to verify fixtures/fittings, planning, alterations and/or lease details
- Appliances & services are untested, dimensions are approximate and floor plans are not to scale
- Through a Homewise Home For Life Plan people aged 60+ can secure this property for up to 59% less, by purchasing a Lifetime Lease.



11738446/20241125/MC1/MC1