



Price
£350,000

Freehold

4x  2x  1x 

**Alexandra Place,
Munsgore Lane, Borden,
Kent, ME9**

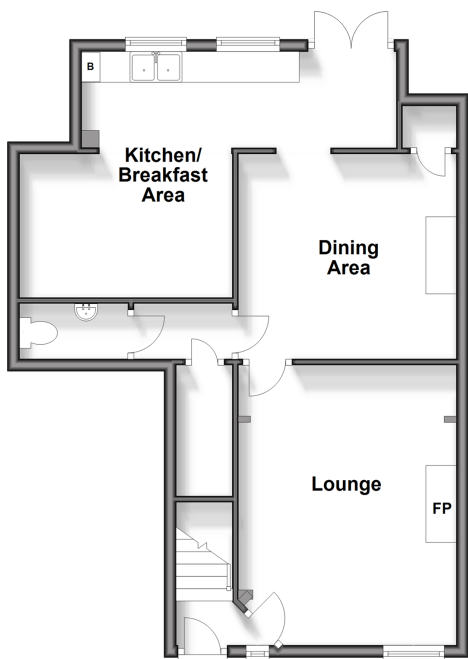
OVER 60?

Secure this property
for up to **59% less!**

Wards
Helping you move forwards

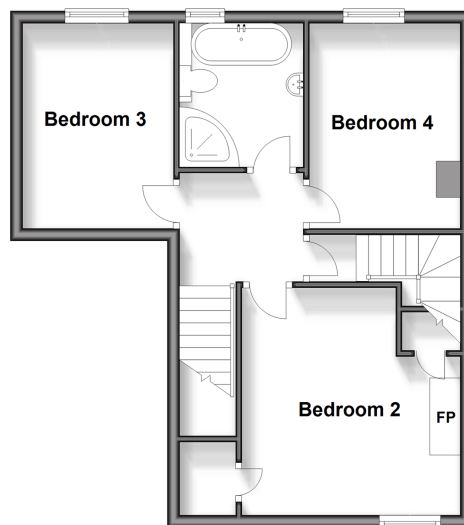
Split Level Ground Floor

Approx. 54.4 sq. metres (585.7 sq. feet)



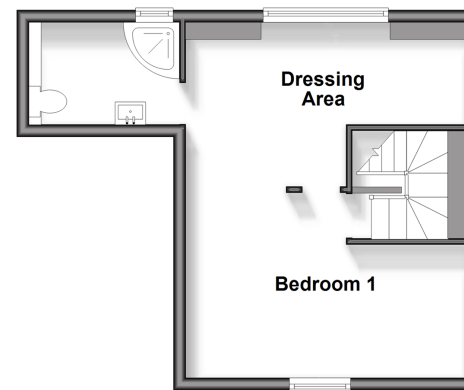
First Floor

Approx. 45.1 sq. metres (485.5 sq. feet)



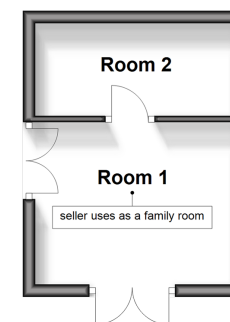
Second Floor

Approx. 30.7 sq. metres (330.2 sq. feet)



Outbuilding

Approx. 13.8 sq. metres (148.1 sq. feet)



Accommodation

SPLIT LEVEL GROUND FLOOR

Entrance Hall
Cloakroom
Lounge: 14'9 x 11'7 (4.50m x 3.53m)
Dining Area: 14'9 x 11'7 (4.50m x 3.53m)
Kitchen/Breakfast Area: 17'1 x 13'6 (5.21m x 4.12m)

FIRST FLOOR

Landing
Bedroom 2: 11'8 x 11'8 (3.56m x 3.56m)
Bedroom 3: 10'8 x 8'5 (3.25m x 2.57m)
Bedroom 4: 10'8 x 8'4 (3.25m x 2.54m)
Bathroom

SECOND FLOOR

Landing
Bedroom 1 & Dressing Area: 22'7 x 15'6 (6.89m x 4.73m)
En-Suite Shower Room

OUTBUILDING

Room 1 (Family Room)
Room 2

OUTSIDE

Off Road Parking
Front Garden
Rear Garden



Main features

- Stunning views to front and rear
- Period terraced house
- Spacious living space
- Opportunity to put your own stamp on this beautiful character property
- Positioned close to travel links to A249, M2 and M20, perfect if you need to commute



Nearest Schools

Primary Schools: Borden C of E Primary 0.4 miles, Grove Park Community Primary 1.2 miles, Woodgrove Primary 1.3 miles
Secondary Schools: The Westlands School 0.9 miles, Integrated Services Programme 1.8 miles



Transport Information

Train Stations: Newington 1.4 miles, Sittingbourne 1.9 miles, Kemsley 2.5 miles



Address

Alexandra Place, Munsgore Lane, Borden, Kent, ME9



Directions

For directions to this property please contact us.



Wards
Helping you move forwards

Call Sittingbourne Branch 01795 427272 ■ wardsofkent.co.uk



- If buying to let, the energy rating will need to be improved to at least 'E' rating before you can let the property
- Appliances & services are untested, dimensions are approximate and floor plans are not to scale

- Legal advice should be taken to verify fixtures/fittings, planning, alterations and/or lease details
- Through a Homewise Home For Life Plan people aged 60+ can secure this property for up to 59% less, by purchasing a Lifetime Lease.

EPC RATING	CURRENT:	POTENTIAL:
	F(31)	C(73)
11738388/20240803/KC/MC1		