



Price
£300,000

Freehold

3x  1x  1x 

**The Street,
Sittingbourne, Kent,
ME9**

OVER 60?

Secure this property
for up to **59% less!**

Wards
Helping you move forwards



Accommodation

GROUND FLOOR

Entrance Hall

Bedroom 1: 13'8 x 13'0 (4.17m x 3.97m)

Bedroom 2: 13'3 x 13'0 (4.04m x 3.97m)

Lounge/Diner: 16'4 x 12'9 (4.98m x 3.89m)

Bedroom 3: 11'0 x 9'4 (3.36m x 2.85m)

Kitchen: 13'0 x 13'0 (3.97m x 3.97m)

Bathroom

OUTSIDE

Front Garden

Off Road Parking

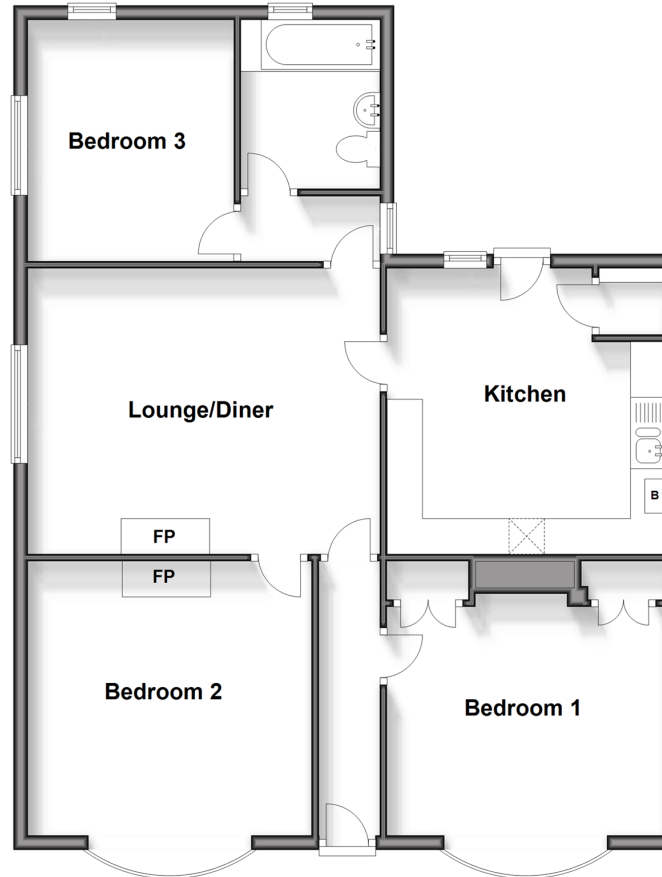
Rear Garden

Main features

- Off road parking to the front
- In the village of Bapchild both Sittingbourne and Faversham are a short drive away
- Perfect opportunity to put your stamp on this bungalow
- No onward chain
- Sought after location

Ground Floor

Approx. 90.0 sq. metres (968.5 sq. feet)



Call Sittingbourne - 01795 427272 ■ wardsof Kent.co.uk

■ Legal advice should be taken to verify fixtures/fittings, planning, alterations and/or lease details
 ■ Through a Homewise Home For Life Plan people aged 60+ can secure this property for up to 59% less, by purchasing a Lifetime Lease.

■ Appliances & services are untested, dimensions are approximate and floor plans are not to scale



11737968/20241008/BP/MC1