



**OVER 60?**

Secure this property  
for up to **59% less!**

**Price**

**£210,000**

**Leasehold**

2x  2x  1x 

**Hedley Walk, Church  
Street, Sittingbourne,  
Kent, ME10**

*Wards*  
Helping you move forwards



## Main features

- Allocated parking and communal garden
- Ground floor apartment
- Ideal first time buy or but to let investor
- Modern living space with open plan living area
- Close to town and mainline railway station

## Accommodation

### GROUND FLOOR

Landing

Lounge/Dining Area: 14'3 x 12'0  
(4.35m x 3.66m)

Kitchen: 9'8 x 7'2 (2.95m x 2.19m)

Bedroom 1: 12'1 x 10'3 (3.69m x 3.13m)

En-Suite Shower Room

Bedroom 2: 11'2 x 8'2 (3.41m x 2.49m)

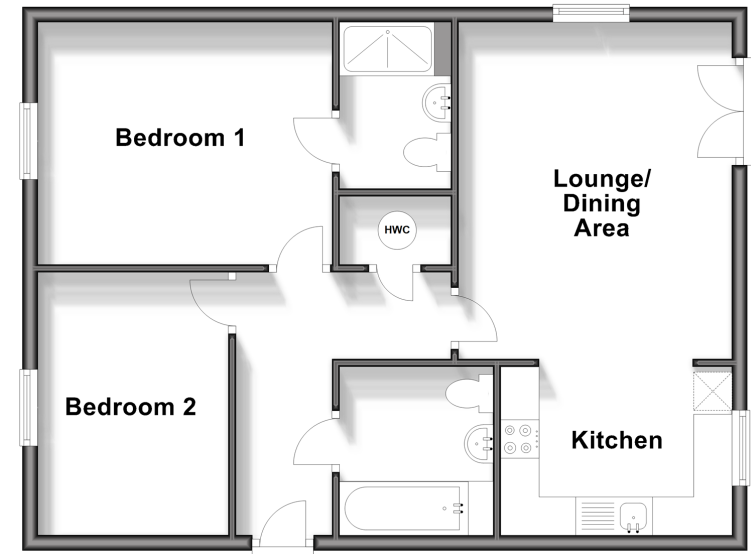
Bathroom

### OUTSIDE

Allocated Parking Space  
Communal Garden

### Ground Floor

Approx. 60.6 sq. metres (652.6 sq. feet)



**Call Sittingbourne - 01795 427272 ■ [wardsof Kent.co.uk](http://wardsof Kent.co.uk)**

- Legal advice should be taken to verify fixtures/fittings, planning, alterations and/or lease details
- Appliances & services are untested, dimensions are approximate and floor plans are not to scale
- Through a Homewise Home For Life Plan people aged 60+ can secure this property for up to 59% less, by purchasing a Lifetime Lease.



11738381/20250507/CK/MC1