



Price
£230,000

Freehold

3x  1x  2x 

**Bassett Road,
Sittingbourne, Kent,
ME10**

OVER 60?

Secure this property
for up to **59% less!**

Wards
Helping you move forwards



Main features

- Neatly presented with neutral decor throughout
- Beautiful landscaped rear garden
- Large kitchen/diner
- Downstairs study currently being used as a 4th bedroom
- Set close to local schools, shops and mainline train station

Accommodation

SPLIT LEVEL GROUND FLOOR

Entrance Hall

Lounge: 12'6 x 12'2 (3.81m x 3.71m)

Dining Area: 12'0 x 10'0 (3.66m x 3.05m)

Kitchen: 10'4 x 7'3 (3.15m x 2.21m)

Study: 9'0 x 7'2 (2.75m x 2.19m)

FIRST FLOOR

Landing

Bedroom 1: 12'9 x 9'1 (3.89m x 2.77m)

Bedroom 2: 12'3 x 7'5 (3.74m x 2.26m)

Bedroom 3: 9'0 x 8'9 (2.75m x 2.67m)

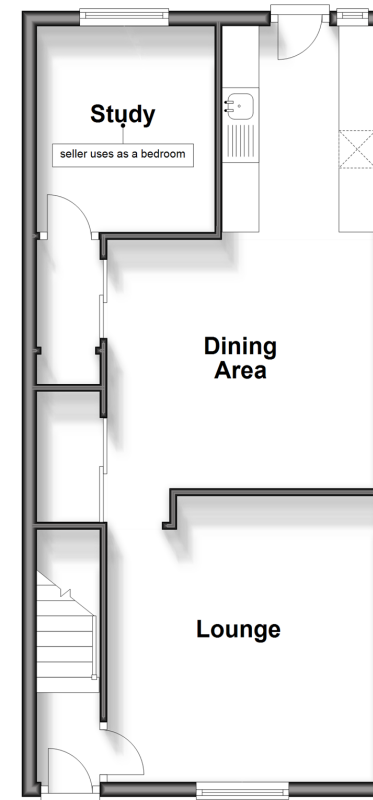
Bathroom

OUTSIDE

Rear Garden

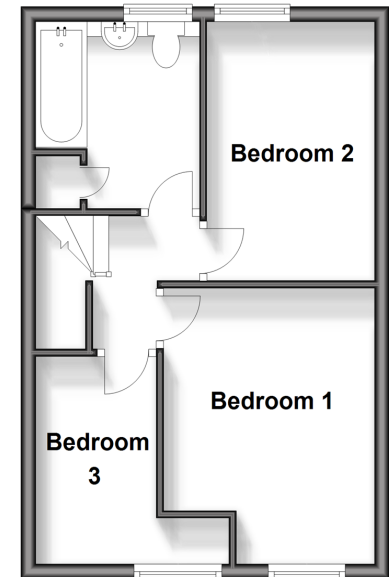
Split Level Ground Floor

Approx. 46.6 sq. metres (501.8 sq. feet)



First Floor

Approx. 33.4 sq. metres (360.0 sq. feet)



Call Sittingbourne - 01795 427272 ■ wardsof Kent.co.uk

- Legal advice should be taken to verify fixtures/fittings, planning, alterations and/or lease details
- Appliances & services are untested, dimensions are approximate and floor plans are not to scale
- Through a Homewise Home For Life Plan people aged 60+ can secure this property for up to 59% less, by purchasing a Lifetime Lease.



11738365/20240717/BP/TB