



**Guide Price**  
**£300,000**

**Freehold**

3x  1x  2x 

**Feldspar Close, Sonora  
Fields, Sittingbourne,  
Kent, ME10**

**OVER 60?**

Secure this property  
for up to **59% less!**

*Wards*  
Helping you move forwards





## Main features

- Beautifully presented with neutral decor throughout
- Garage and off road parking to the side
- Set in a quiet cul-de-sac location
- Spacious accommodation with a large garden, perfect for entertaining
- Close to shops, local amenities and motorway links

## Accommodation

### GROUND FLOOR

Entrance Hall  
Cloakroom  
Lounge/Diner: 17'4 x 16'0 (5.29m x 4.88m)  
Kitchen: 9'4 x 7'8 (2.85m x 2.34m)

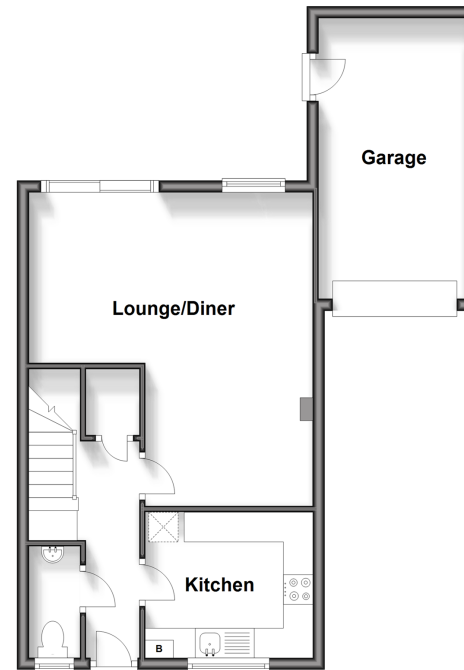
### FIRST FLOOR

Landing  
Bedroom 1: 16'1 x 10'4 (4.91m x 3.15m)  
Bedroom 2: 11'7 x 8'4 (3.53m x 2.54m)  
Bedroom 3: 10'9 x 7'3 (3.28m x 2.21m)  
Bathroom

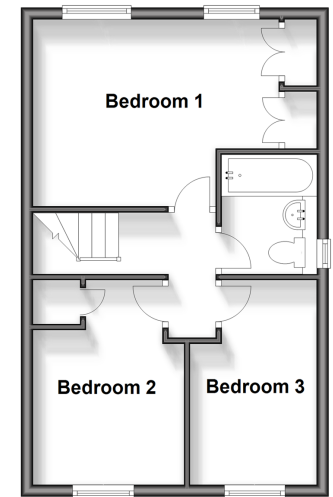
### OUTSIDE

Front Garden  
Garage  
Off Road Parking  
Rear Garden

**Ground Floor**  
Approx. 49.8 sq. metres (535.5 sq. feet)



**First Floor**  
Approx. 37.8 sq. metres (406.9 sq. feet)



**Call Sittingbourne - 01795 427272 ■ [wardsofkent.co.uk](http://wardsofkent.co.uk)**

■ Legal advice should be taken to verify fixtures/fittings, planning, alterations and/or lease details  
■ Through a Homewise Home For Life Plan people aged 60+ can secure this property for up to 59% less, by purchasing a Lifetime Lease.

■ Appliances & services are untested, dimensions are approximate and floor plans are not to scale