



Price
£550,000

Freehold

4x  2x  2x 

**Bell Road,
Sittingbourne, Kent,
ME10**

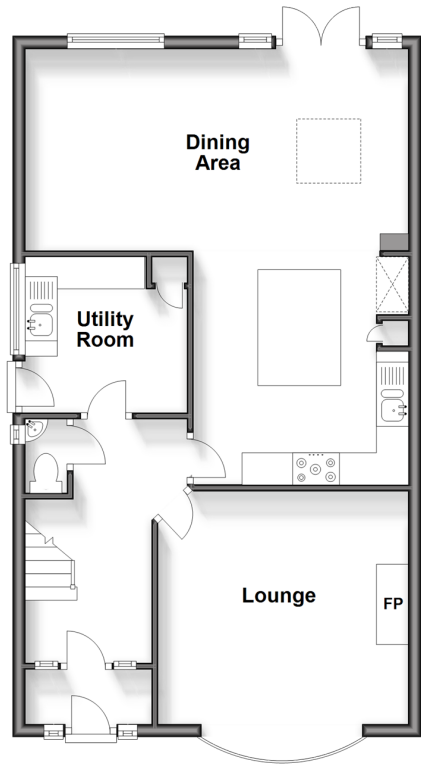
OVER 60?

Secure this property
for up to **59% less!**

Wards
Helping you move forwards

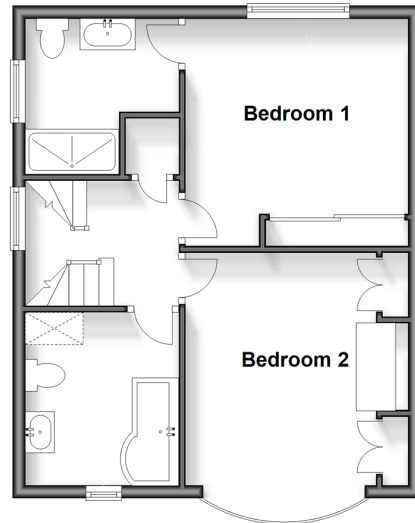
Ground Floor

Approx. 63.2 sq. metres (680.8 sq. feet)



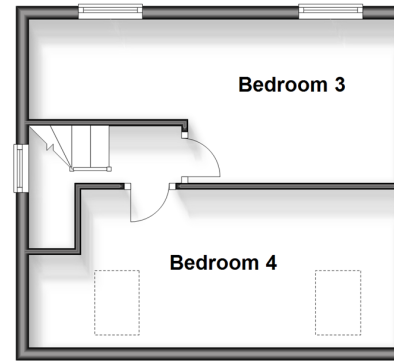
First Floor

Approx. 43.9 sq. metres (472.2 sq. feet)



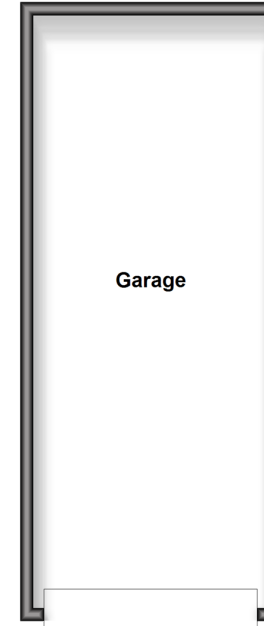
Second Floor

Approx. 29.5 sq. metres (317.8 sq. feet)



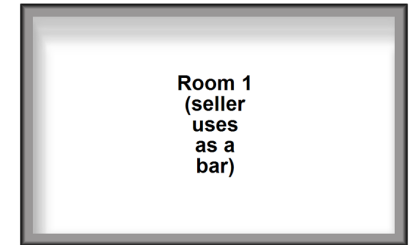
Outbuilding

Approx. 33.6 sq. metres (362.0 sq. feet)



Outbuilding

Approx. 19.1 sq. metres (205.2 sq. feet)



Accommodation

GROUND FLOOR

Porch
Entrance Hall
Cloakroom
Lounge: 12'9 x 11'8 (3.89m x 3.56m)
Kitchen/Breakfast Area: 24'0 x 11'5 (7.32m x 3.48m)
Dining Area: 19'1 x 10'6 (5.82m x 3.20m)
Utility Room: 8'1 x 7'9 (2.47m x 2.36m)

FIRST FLOOR

Landing
Bedroom 1: 11'5 x 9'3 (3.48m x 2.82m)
En-Suite Shower Room
Bedroom 2: 12'1 x 9'5 (3.69m x 2.87m)
Bathroom

SECOND FLOOR

Bedroom 3: 15'6 x 8'3 (4.73m x 2.52m)
Bedroom 4: 15'6 x 7'10 (4.73m x 2.39m)

OUTSIDE

Front Garden
Off Road Parking
Tandem Garage
Rear Garden
Outbuilding (Used as a bar)



Main features

- Perfect family home with all the bedrooms being double sized
- Spacious open plan living accommodation
- Sought after south side location
- Close to schools, shops and amenities
- Stunning rear garden ideal for entertaining friends and family offering an abundance of space



Nearest Schools

Primary Schools: St Peter's Catholic Primary 0.6 miles, Minterne Community Junior School 0.6 miles, Woodgrove Primary 0.9 miles
Secondary Schools: Fulston Manor School 0.3 miles, Highsted Grammar School 0.5 miles



Transport Information

Train Stations: Sittingbourne 1.4 miles, Kemsley 2.8 miles, Newington 3.8 miles



Address

Bell Road, Sittingbourne, Kent, ME10



Directions

For directions to this property please contact us.



Wards
Helping you move forwards

Call Sittingbourne Branch 01795 427272 ■ wardsofkent.co.uk



■ Legal advice should be taken to verify fixtures/fittings, planning, alterations and/or lease details ■ Appliances & services are untested, dimensions are approximate and floor plans are not to scale
■ Through a Homewise Home For Life Plan people aged 60+ can secure this property for up to 59% less, by purchasing a Lifetime Lease.



11738303/20240410/KC/MC1