



Price

£425,000

Freehold

4x  2x  2x 

Moonfleet Close,  
Kemsley, Sittingbourne,  
Kent, ME10

**OVER 60?**

Secure this property  
for up to **59% less!**

*Wards*

Helping you move forwards



## Main features

- Immaculately presented with modern decor throughout
- Double garage and off road parking
- En-suite shower room to bedroom 1
- Separate study, perfect for home working
- Beautiful large garden ideal for entertaining family and friends

## Accommodation

### GROUND FLOOR

Entrance Hall  
Cloakroom  
Dining Area: 16'1 x 9'5 (4.91m x 2.87m)  
Kitchen: 16'0 x 9'5 (4.88m x 2.87m)  
Study: 7'7 x 7'0 (2.31m x 2.14m)  
Lounge: 16'4 x 11'3 (4.98m x 3.43m)

### FIRST FLOOR

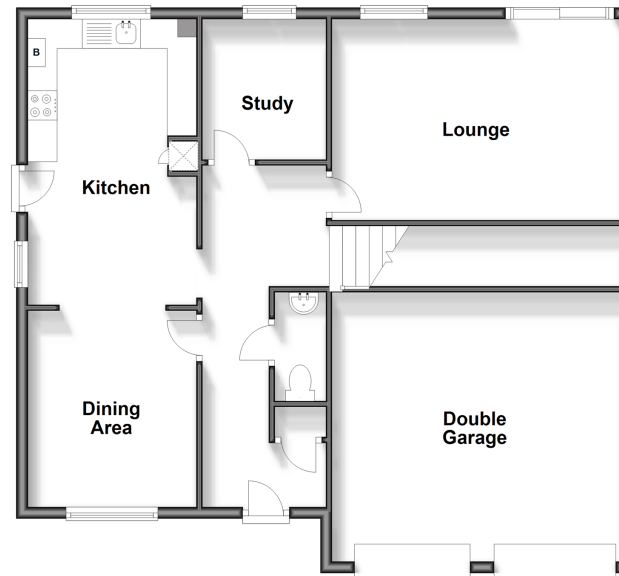
Landing  
Bedroom 1: 15'3 x 9'9 (4.65m x 2.97m)  
En-Suite Shower Room  
Bedroom 2: 13'1 x 8'0 (3.99m x 2.44m)  
Bedroom 3: 12'6 x 9'9 (3.81m x 2.97m)  
Bedroom 4: 9'3 x 8'4 (2.82m x 2.54m)  
Bathroom

### OUTSIDE

Front Garden  
Double Garage  
Off Road Parking  
Rear Garden

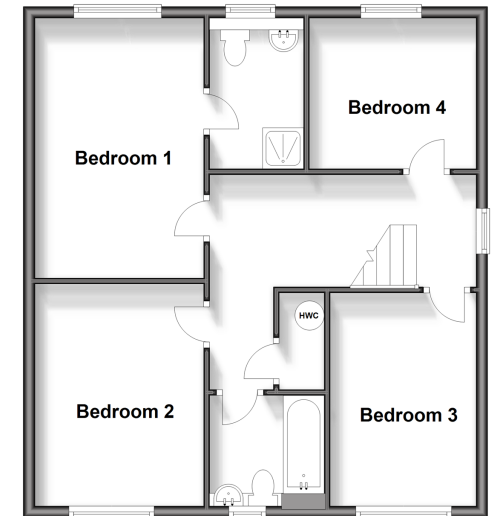
### Ground Floor

Approx. 89.6 sq. metres (964.9 sq. feet)



### First Floor

Approx. 63.0 sq. metres (678.5 sq. feet)



Call Sittingbourne - 01795 427272 ■ [wardsof Kent.co.uk](http://wardsof Kent.co.uk)

- Legal advice should be taken to verify fixtures/fittings, planning, alterations and/or lease details
- Through a Homewise Home For Life Plan people aged 60+ can secure this property for up to 59% less, by purchasing a Lifetime Lease.

- Appliances & services are untested, dimensions are approximate and floor plans are not to scale



11737799/20240203/KC/TB