



Price
£450,000

Freehold

4x  2x  2x 

**Station Road, Teynham,
Sittingbourne, Kent,
ME9**

OVER 60?

Secure this property
for up to **59% less!**

Wards
Helping you move forwards



Main features

- **Spacious detached house with versatile accommodation, giving all the family room they desire**
- **Popular location of Teynham, close to shops, schools and train station**
- **Off road parking plus garage and side gate leading to more parking**
- **Solar panels are an added bonus**
- **Large summer house with under floor heating and floor to ceiling cupboards, perfect for storage solution and home study**

Accommodation

GROUND FLOOR

Entrance Hall
Cloakroom
Kitchen/Diner: 29'4 x 9'2 (8.95m x 2.80m)
Snug/Study: 11'1 x 9'3 (3.38m x 2.82m)
Lounge: 16'5 x 11'7 (5.01m x 3.53m)

FIRST FLOOR

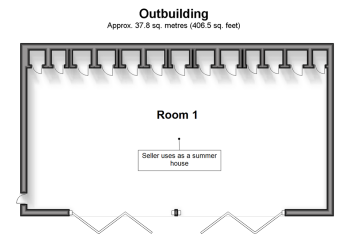
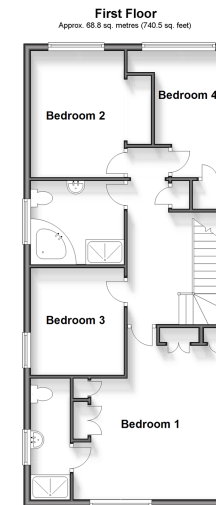
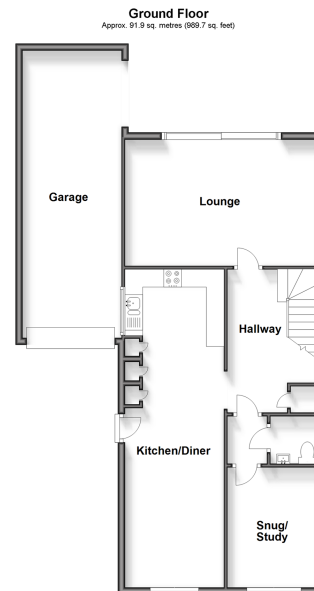
Landing
Bedroom 1: 16'4 x 14'3 (4.98m x 4.35m)
En-Suite Shower Room
Bedroom 2: 11'11 x 6'10 (3.63m x 2.08m)
Bedroom 3: 11'11 x 9'8 (3.63m x 2.95m)
Bedroom 4: 9'11 x 9'4 (3.02m x 2.85m)
Bathroom

OUTBUILDING

Room 1 (Summer House): 27'7 x 12'9 (8.41m x 3.89m)

OUTSIDE

Off Road Parking To Front
Garage
Rear Garden
Parking To The Rear



Call Sittingbourne - 01795 427272 ■ wardsof Kent.co.uk

■ Legal advice should be taken to verify fixtures/fittings, planning, alterations and/or lease details
■ Through a Homewise Home For Life Plan people aged 60+ can secure this property for up to 59% less, by purchasing a Lifetime Lease.

■ Appliances & services are untested, dimensions are approximate and floor plans are not to scale



11738146/20250127/KW/JS