



Price
£260,000

Freehold

3x  2x  1x 

**Mallow Road,
Minster-On-Sea, Kent,
ME12**

OVER 60?

Secure this property
for up to **59% less!**



Wards
Helping you move forwards



Main features

- Car port with parking for 2 cars
- Perfect for first time buyers all ready to move straight in to
- En-suite shower room plus a bathroom
- Good size lounge plus kitchen/diner to the rear
- Handy downstairs cloakroom

Accommodation

GROUND FLOOR

Entrance Porch
Downstairs Cloakroom: 5'10 x 3'3 (1.78m x 0.99m)
Lounge: 18'7 x 11'1 (5.67m x 3.38m)
Kitchen/Diner: 13'8 x 10'3 (4.17m x 3.13m)

FIRST FLOOR

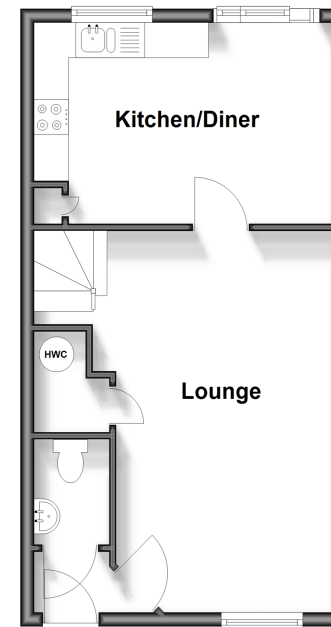
Landing
Bedroom 1: 11'4 x 10'5 (3.46m x 3.18m)
En-Suite Shower Room: 4'8 x 4'7 (1.42m x 1.40m)
Bedroom 2: 11'3 x 7'7 (3.43m x 2.31m)
Bedroom 3: 8'3 x 5'9 (2.52m x 1.75m)
Bathroom: 7'7 x 5'6 (2.31m x 1.68m)

OUTSIDE

Front Garden
Rear Garden
Carport

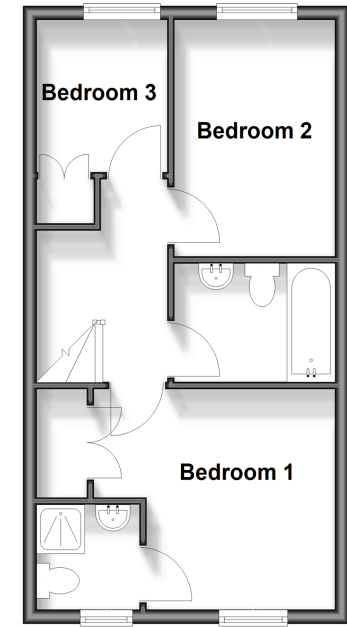
Ground Floor

Approx. 36.6 sq. metres (393.8 sq. feet)



First Floor

Approx. 36.6 sq. metres (393.6 sq. feet)



Call Sheerness - 01795 664651 ■ wardsofkent.co.uk

■ Legal advice should be taken to verify fixtures/fittings, planning, alterations and/or lease details
■ Through a Homewise Home For Life Plan people aged 60+ can secure this property for up to 59% less, by purchasing a Lifetime Lease.

■ Appliances & services are untested, dimensions are approximate and floor plans are not to scale



11635518/20250512/GS/MH