



Guide Price
£250,000

Freehold

3x  2x  1x 

**Mount Field,
Queenborough, Kent,
ME11**

OVER 60?

Secure this property
for up to **59% less!**

Wards
Helping you move forwards



Main features

- **Parking to the front for 2 cars**
- **Situated in a cul-de-sac location**
- **En-suite shower room to the main bedroom**
- **Great links off the island onto the A249**
- **Take a stroll along to the shops at Neats Court**
- **Just around the corner from Queenborough train station**

Accommodation

GROUND FLOOR

Entrance Hall
Downstairs Cloakroom: 5'6 x 3'7 (1.68m x 1.09m)
Lounge/Dining Area: 16'5 x 16'3 (5.01m x 4.96m)
Kitchen : 27'0 x 9'0 (8.24m x 2.75m)

FIRST FLOOR

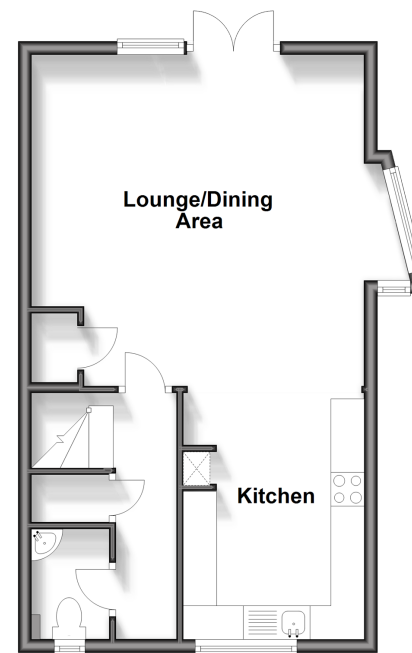
Landing
Bedroom 1: 12'4 x 11'8 (3.76m x 3.56m)
En-suite Shower Room: 8'1 x 3'9 (2.47m x 1.14m)
Bedroom 2: 12'4 x 7'9 (3.76m x 2.36m)
Bedroom 3: 8'4 x 7'9 (2.54m x 2.36m)
Wet Room: 8'1 x 4'9 (2.47m x 1.45m)

OUTSIDE

Front Driveway
Rear Garden

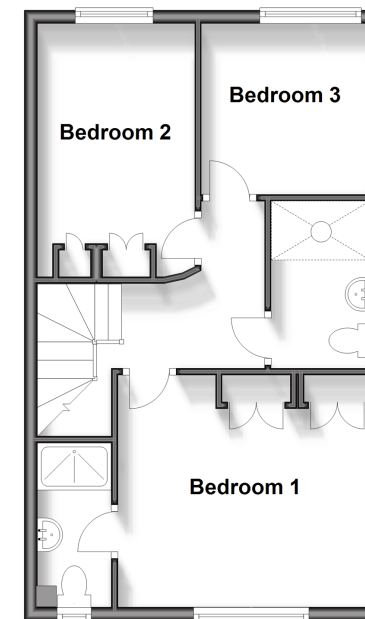
Ground Floor

Approx. 44.2 sq. metres (475.3 sq. feet)



First Floor

Approx. 43.3 sq. metres (466.5 sq. feet)



Call Sheerness - 01795 664651 ■ wardsofkent.co.uk

■ Legal advice should be taken to verify fixtures/fittings, planning, alterations and/or lease details
■ Through a Homewise Home For Life Plan people aged 60+ can secure this property for up to 59% less, by purchasing a Lifetime Lease.

■ Appliances & services are untested, dimensions are approximate and floor plans are not to scale



11635456/20250412/DS/JLS