



Price
£350,000

Freehold

3x  2x  1x 

**"Greystones", Saxon
Avenue, Minster On Sea,
Kent, ME12**

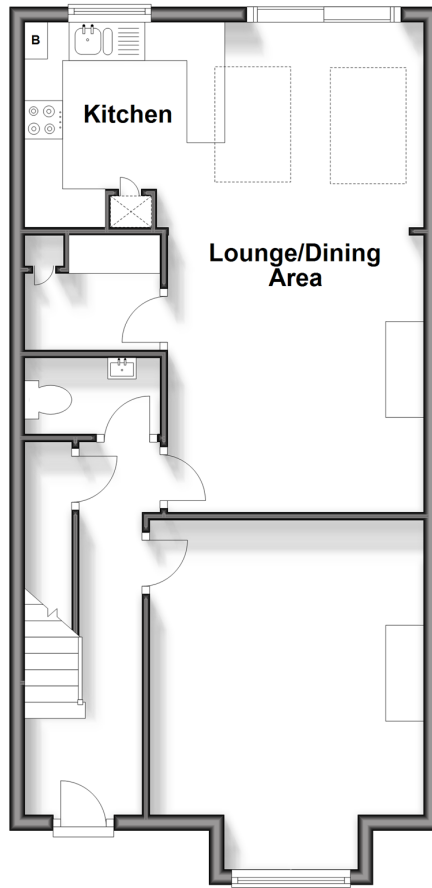
OVER 60?

Secure this property
for up to **59% less!**

Wards
Helping you move forwards

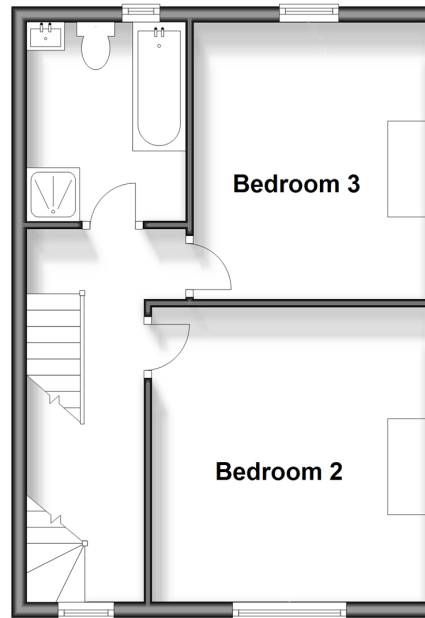
Ground Floor

Approx. 55.6 sq. metres (598.6 sq. feet)



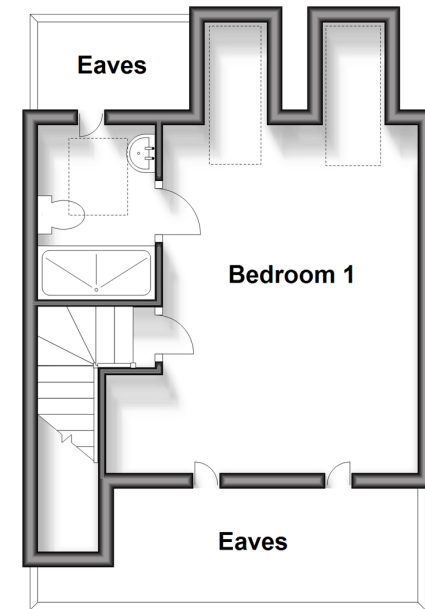
First Floor

Approx. 39.8 sq. metres (428.1 sq. feet)



Second Floor

Approx. 25.8 sq. metres (277.6 sq. feet)



Accommodation

GROUND FLOOR

Entrance Hallway

Downstairs Cloakroom: 6'1 x 3'3 (1.86m x 0.99m)

Lounge/Dining Area: 22'2 x 11'4 (6.76m x 3.46m)

Kitchen: 17'4 x 8'8 (5.29m x 2.64m)

Utility Room: 6'10 x 5'2 (2.08m x 1.58m)

FIRST FLOOR

Landing

Bedroom 2: 13'5 x 12'1 (4.09m x 3.69m)

Bedroom 3: 12'3 x 9'8 (3.74m x 2.95m)

Bathroom: 8'9 x 7'5 (2.67m x 2.26m)

SECOND FLOOR

Landing

Bedroom 1: 19'5 x 11'4 (5.92m x 3.46m)

En-Suite Shower Room: 7'7 x 4'9 (2.31m x 1.45m)

OUTSIDE

Front Driveway

Rear Garden



Main features

- Off road parking to the front
- Great size lounge/dining area
- Modern fitted kitchen with built in oven, hob and extractor fan
- Stunning en-suite shower room to the main bedroom
- Fantastic size garden with newly laid turf and patio area



Nearest Schools

Primary Schools: Minster in Sheppey Primary 0.4 miles, St George's C of E Middle School 1.0 miles, Halfway Houses Primary 1.3 miles

Secondary Schools: Leigh Academy 0.8 miles, The



Transport Information

Train Stations: Queenborough 2.8 miles, Sheerness-on-Sea 2.9 miles, Swale 3.7 miles



Address

"Greystones", Saxon Avenue, Minster On Sea, Kent, ME12



Directions

For directions to this property please contact us.



Call Sheerness Branch 01795 664651 ■ wardsofkent.co.uk



- If buying to let, the energy rating will need to be improved to at least 'E' rating before you can let the property
- Appliances & services are untested, dimensions are approximate and floor plans are not to scale

- Legal advice should be taken to verify fixtures/fittings, planning, alterations and/or lease details
- Through a Homewise Home For Life Plan people aged 60+ can secure this property for up to 59% less, by purchasing a Lifetime Lease.

11635425/20241102/DS/JLS