



OVER 60?

Secure this property
for up to **59% less!**

Price

£220,000

Freehold

2x  1x  1x 

**Granville Road,
Sheerness, Kent, ME12**

Wards
Helping you move forwards



Main features

- Perfect for first time buyers or investors alike
- Large upstairs bathroom with bath and separate shower
- Conservatory to the rear overlooking the rear garden
- Short stroll to the High Street and train station
- Handy utility room

Accommodation

GROUND FLOOR

Entrance Porch
 Lounge: 15'1 x 12'6 (4.60m x 3.81m)
 Kitchen/Diner: 15'1 x 13'4 (4.60m x 4.07m)
 Conservatory: 13'2 x 10'4 (4.02m x 3.15m)
 Utility Room: 6'8 x 3'1 (2.03m x 0.94m)

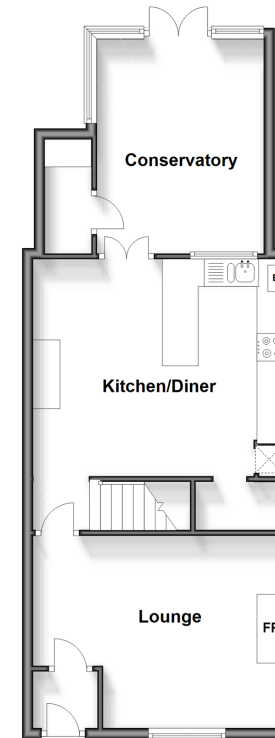
FIRST FLOOR

Landing
 Bedroom 1: 15'6 x 12'10 (4.73m x 3.91m)
 Bedroom 2: 13'5 x 8'0 (4.09m x 2.44m)
 Bathroom: 10'6 x 7'10 (3.20m x 2.39m)

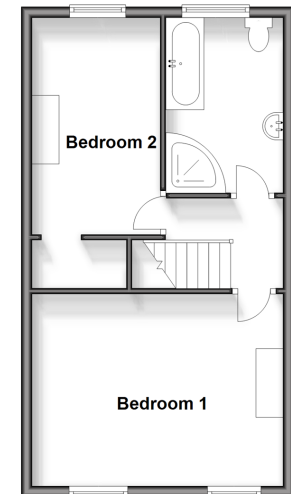
OUTSIDE

Rear Garden

Ground Floor
 Approx. 53.8 sq. metres (579.3 sq. feet)



First Floor
 Approx. 39.4 sq. metres (424.4 sq. feet)



Call Sheerness - 01795 664651 ■ wardsofkent.co.uk

■ Legal advice should be taken to verify fixtures/fittings, planning, alterations and/or lease details
 ■ Through a Homewise Home For Life Plan people aged 60+ can secure this property for up to 59% less, by purchasing a Lifetime Lease.

■ Appliances & services are untested, dimensions are approximate and floor plans are not to scale



11635411/20241019/DS/JLS