



Price
£330,000

Freehold

3x  2x  1x 

Nunnery Grove, Minster
On Sea, Kent, ME12

OVER 60?

Secure this property
for up to **59% less!**

Wards
Helping you move forwards



Main features

- **Parking for 2 cars plus a garage**
- **Great size lounge to sit and relax in.**
- **Nice size low maintenance rear garden**
- **Set in a cul-de-sac location with a park opposite**
- **Take a brisk stroll down to the award winning beach**

Accommodation

GROUND FLOOR

Downstairs Cloakroom: 5'7 x 3'9 (1.70m x 1.14m)
 Entrance Hallway
 Lounge: 16'0 x 10'3 (4.88m x 3.13m)
 Kitchen/Breakfast Room: 18'3 x 10'2 (5.57m x 3.10m)

FIRST FLOOR

Landing
 Bedroom 1: 11'2 x 10'4 (3.41m x 3.15m)
 En-Suite Shower Room: 6'4 0 x 6'0 (1.93m x 1.83m)
 Bedroom 2: 11'4 x 6'8 (3.46m x 2.03m)
 Bedroom 3: 10'4 x 9'0 (3.15m x 2.75m)

OUTBUILDING

Garage: 20'4 x 9'9 (6.20m x 2.97m)

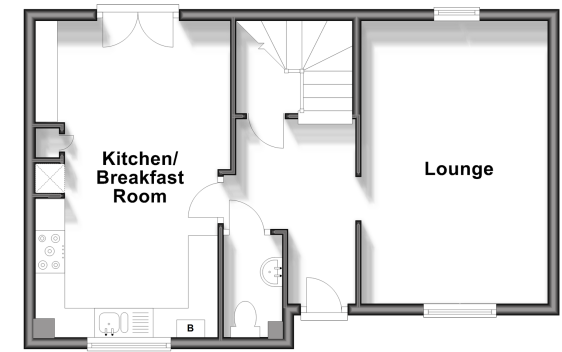
OUTSIDE

Front Driveway
 Front Garden
 Rear Garden

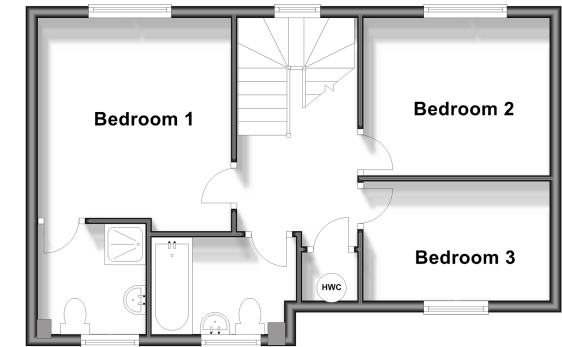
Call Sheerness - 01795 664651 ■ wardsofkent.co.uk

- Legal advice should be taken to verify fixtures/fittings, planning, alterations and/or lease details
- Appliances & services are untested, dimensions are approximate and floor plans are not to scale
- Through a Homewise Home For Life Plan people aged 60+ can secure this property for up to 59% less, by purchasing a Lifetime Lease.

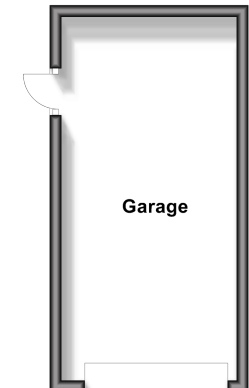
Ground Floor
 Approx. 44.8 sq. metres (482.6 sq. feet)



First Floor
 Approx. 44.8 sq. metres (482.6 sq. feet)



Outbuilding
 Approx. 18.7 sq. metres (200.9 sq. feet)



11635399/20241106/MH/JLS