



Price
£550,000

Freehold

5x  2x  3x 

**Chequers Road,
Minster-On-Sea, Kent,
ME12**

OVER 60?

Secure this property
for up to **59% less!**

Wards
Helping you move forwards

Accommodation

GROUND FLOOR

Entrance Porch

Entrance Hall

Kitchen/Breakfast Area: 16'2 x 12'0 (4.93m x 3.66m)

Lounge: 13'8 x 13'1 (4.17m x 3.99m)

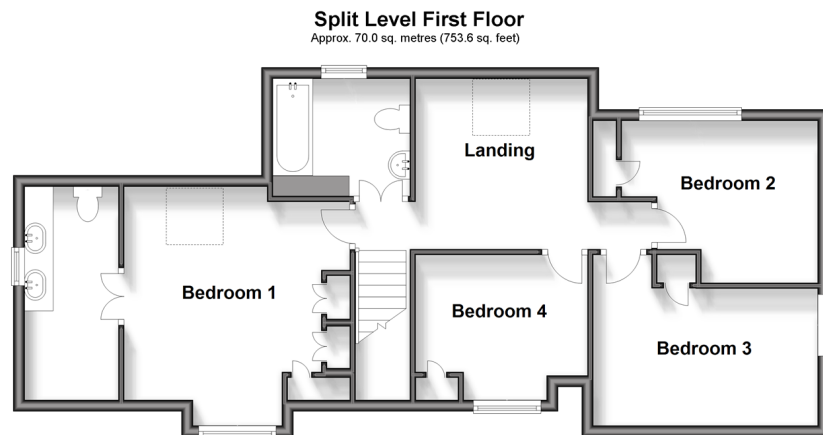
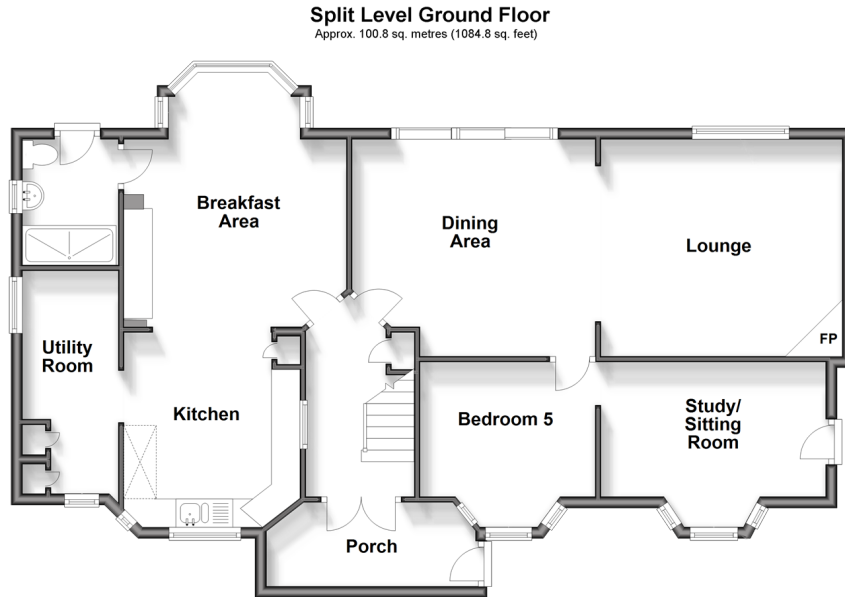
Dining Area: 14'1 x 13'0 (4.30m x 3.97m)

Study/Sitting Room: 12'9 (3.89m) x 10'11 (3.33m) narrowing to 8'0 (2.44m)

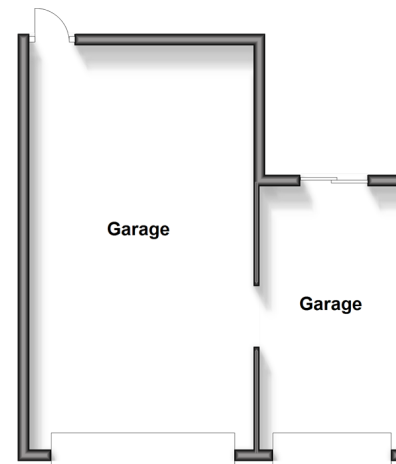
Utility Room: 12'9 (3.89m) narrowing to 7'4 (2.24m) x 5'2 (1.58m)

Shower Room: 7'9 x 5'3 (2.36m x 1.60m)

Bedroom 5: 11'8 (3.56m) narrowing to 10'2 (3.10m) x 10'6 (3.20m)



Outbuilding
Approx. 40.3 sq. metres (434.1 sq. feet)



FIRST FLOOR

Landing

Bedroom 1: 14'3 (4.35m) x 12'9 (3.89m) narrowing to 10'9 (3.28m)

En-suite Shower Room: 12'5 x 5'2 (3.79m x 1.58m)

Bedroom 2: 12'8 x 8'1 (3.86m x 2.47m)

Bedroom 3: 10'11 x 10'0 (3.33m x 3.05m)

Bedroom 4: 10'1 x 9'2 (3.08m x 2.80m)

Bathroom: 7'5 x 6'0 (2.26m x 1.83m)

OUTBUILDING

Garage: 24'0 x 13'0 (7.32m x 3.97m)

Garage: 14'0 x 8'2 (4.27m x 2.49m)

OUTSIDE

Front Garden

Front Driveway

Rear Garden



Main features

- Parking for a large motor home or a caravan on driveway
- Work on your car in the extra large garage
- Study which could be an extra bedroom if required
- The stunning garden is the centre piece, great for both pottering around or relaxing



Nearest Schools

Primary Schools: Minster in Sheppey Primary 0.7 miles, Halfway Houses Primary 2.1 miles

Secondary Schools: Oasis Academy 1.6 miles, Fulston Manor School 7.0 miles



Transport Information

Train Stations: Queenborough 3.6 miles, Sheerness-on-Sea 3.7 miles, Swale 4.6 miles



Address

Chequers Road, Minster-On-Sea, Kent, ME12



Directions

For directions to this property please contact us.



Wards
Helping you move forwards

Call Sheerness Branch 01795 664651 ■ wardsofkent.co.uk



- Legal advice should be taken to verify fixtures/fittings, planning, alterations and/or lease details
- Appliances & services are untested, dimensions are approximate and floor plans are not to scale
- Through a Homewise Home For Life Plan people aged 60+ can secure this property for up to 59% less, by purchasing a Lifetime Lease.
- This property has been underpinned, please contact us before proceeding



11635315/20240716/PA/PA