



Price
£500,000

Freehold

4x  2x  2x 

**Southsea Avenue,
Minster On Sea, Kent,
ME12**

OVER 60?

Secure this property
for up to **59% less!**

Wards
Helping you move forwards



Main features

- Personal door into the garage
- Modern kitchen with Neff oven, hob & dishwasher
- Sit and relax in the conservatory
- Sea views from 2 of the bedrooms upstairs
- Fabulous log burner to cosy up to in the lounge
- No onward chain

Accommodation

GROUND FLOOR

- Entrance Porch
- Entrance Hall: 11'5 x 9'2 (3.48m x 2.80m)
- Downstairs Cloakroom: 5'0 x 2'7 (1.53m x 0.79m)
- Lounge: 17'7 x 12'9 (5.36m x 3.89m)
- Dining Room: 12'9 x 10'9 (3.89m x 3.28m)
- Kitchen/Breakfast Room: (L-shaped) 13'9 x 9'2 (4.19m x 2.80m) plus 9'3 x 6'8 (2.82m x 2.03m)
- Conservatory: 12'7 x 11'9 (3.84m x 3.58m)

FIRST FLOOR

- Landing
- Bedroom 1: 13'3 x 10'9 (4.04m x 3.28m)
- En-Suite Shower Room: 8'0 x 4'0 (2.44m x 1.22m)
- Bedroom 2: 18'0 x 8'3 (5.49m x 2.52m)
- Bedroom 3: 13'3 x 10'9 (4.04m x 3.28m)
- Bedroom 4: 12'3 (3.74m) x 9'0 (2.75m) narrowing to 7'4 (2.24m)
- Bathroom: 7'9 x 6'9 (2.36m x 2.06m)

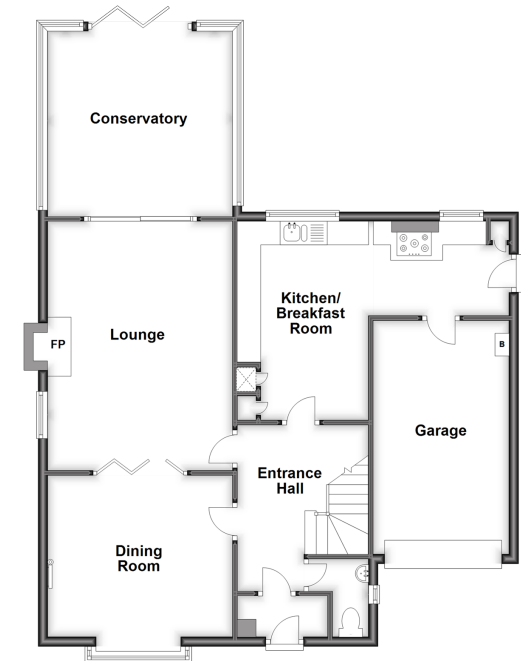
OUTSIDE

- Front Garden
- Front Driveway
- Rear Garden
- Workshop: 16'0 x 12'0 (4.88m x 3.66m)
- Garage: 15'9 x 8'3 (4.80m x 2.52m)

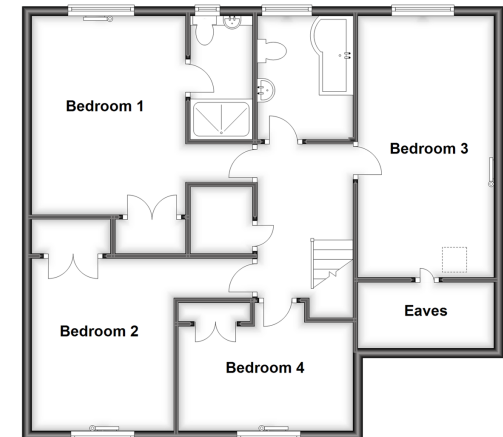
Call Sheerness - 01795 664651 ■ wardsofkent.co.uk

- Legal advice should be taken to verify fixtures/fittings, planning, alterations and/or lease details
- Appliances & services are untested, dimensions are approximate and floor plans are not to scale
- Through a Homewise Home For Life Plan people aged 60+ can secure this property for up to 59% less, by purchasing a Lifetime Lease.

Ground Floor
Approx. 97.1 sq. metres (1045.7 sq. feet)



First Floor
Approx. 81.1 sq. metres (872.7 sq. feet)



11634823/20240514/DS/PA