



Price
£360,000

Freehold

3x  1x  1x 

**Mooring Road,
Rochester, Kent, ME1**

OVER 60?

Secure this property
for up to **59% less!**

Wards
Helping you move forwards



Main features

- Chain free semi-detached house
- Off-road parking
- Perfect for families and first time buyers
- Within walking distance of Rochester Station, great schools and historic high street
- Open plan lounge/dining area

Accommodation

GROUND FLOOR

Entrance Hall
Lounge: 14'5 x 12'5 (4.40m x 3.79m)
Dining Area: 10'3 x 9'3 (3.13m x 2.82m)
Kitchen: 9'3 x 8'11 (2.82m x 2.72m)

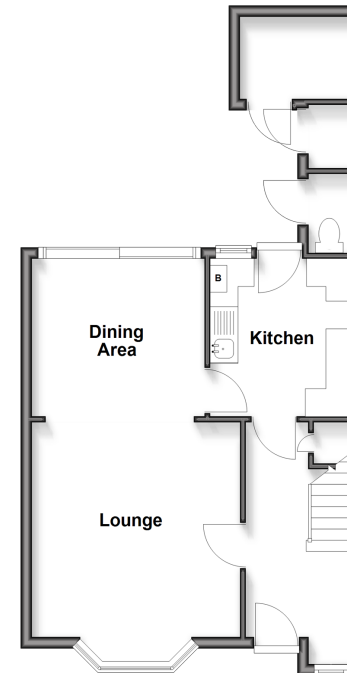
FIRST FLOOR

Landing
Bedroom 1: 12'7 x 9'4 (3.84m x 2.85m)
Bedroom 2: 8'11 x 7'10 (2.72m x 2.39m)
Bedroom 3: 12'9 x 12'7 (3.89m x 3.84m)
Bathroom

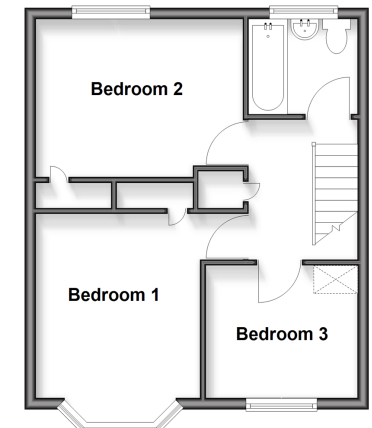
OUTSIDE

Front and Rear Garden
Off-Road Parking

Ground Floor
Approx. 43.9 sq. metres (472.1 sq. feet)



First Floor
Approx. 39.5 sq. metres (424.8 sq. feet)



Call Rochester - 01634 830925 ■ wardsofkent.co.uk

■ Legal advice should be taken to verify fixtures/fittings, planning, alterations and/or lease details
■ Through a Homewise Home For Life Plan people aged 60+ can secure this property for up to 59% less, by purchasing a Lifetime Lease.

■ Appliances & services are untested, dimensions are approximate and floor plans are not to scale