



OVER 60?

Secure this property
for up to **59% less!**

Price

£290,000

Freehold

3x  1x  1x 

**Carton Close, Rochester,
Kent, ME1**

Wards
Helping you move forwards



Main features

- Perfect for first time buyers looking to get on the property ladder
- Landscaped rear garden ideal for children
- Kitchen with patio doors onto the garden
- Parking to the front
- Conveniently located for great primary schools

Accommodation

GROUND FLOOR

Lounge: 15'5 x 11'4 (4.70m x 3.46m)

Kitchen: 12'7 x 10'8 (3.84m x 3.25m)

Bathroom

FIRST FLOOR

Landing

Bedroom 1: 15'5 x 10'0 (4.70m x 3.05m)

Bedroom 2: 14'5 x 7'6 (4.40m x 2.29m)

Bedroom 3: 7'8 x 6'2 (2.34m x 1.88m)

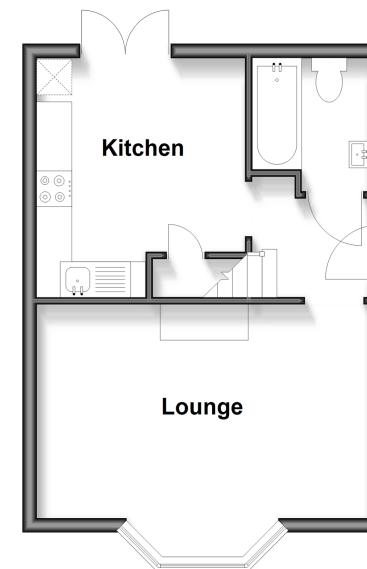
OUTSIDE

Front & Rear Garden

Driveway to Front

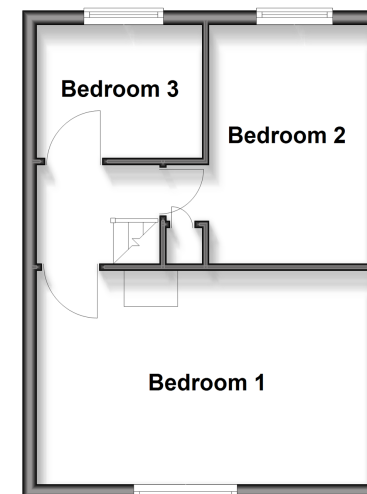
Ground Floor

Approx. 30.7 sq. metres (330.9 sq. feet)



First Floor

Approx. 30.4 sq. metres (327.5 sq. feet)



Call Rochester - 01634 830925 ■ wardsofkent.co.uk

- Legal advice should be taken to verify fixtures/fittings, planning, alterations and/or lease details
- Appliances & services are untested, dimensions are approximate and floor plans are not to scale
- Through a Homewise Home For Life Plan people aged 60+ can secure this property for up to 59% less, by purchasing a Lifetime Lease.



11526352/20250412/DG/AB