



OVER 60?

Secure this property
for up to **59% less!**

Price
£375,000

Freehold

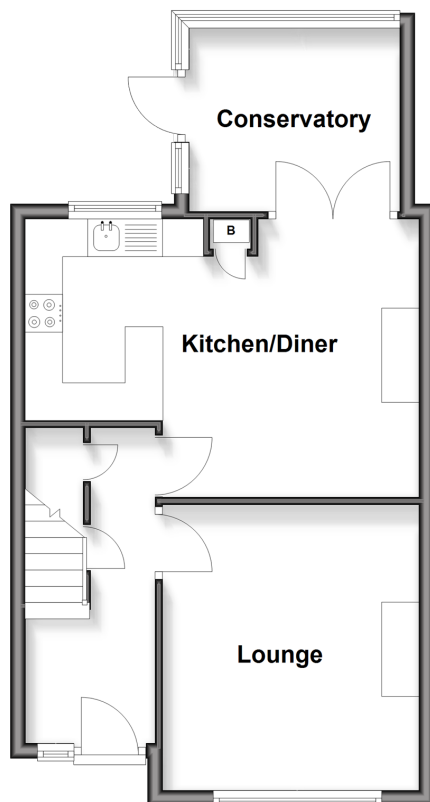
3x  2x  1x 

**St. William's Way,
Rochester, Kent, ME1**

Wards
Helping you move forwards

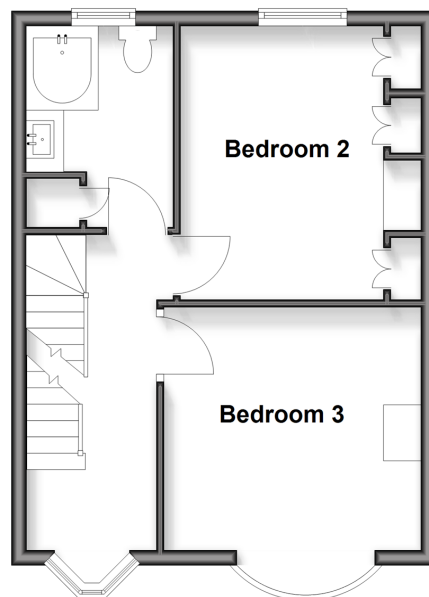
Ground Floor

Approx. 45.9 sq. metres (494.2 sq. feet)



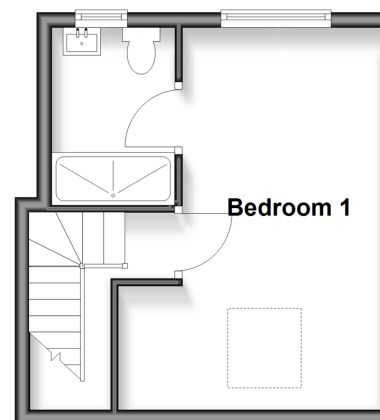
First Floor

Approx. 37.0 sq. metres (397.8 sq. feet)



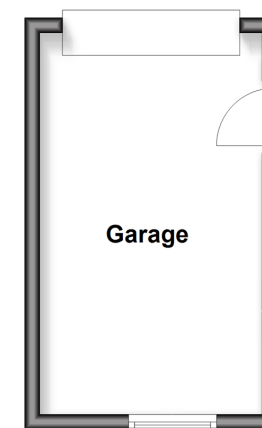
Second Floor

Approx. 23.0 sq. metres (247.5 sq. feet)



Outbuilding

Approx. 15.0 sq. metres (161.9 sq. feet)



Accommodation

GROUND FLOOR

Hallway

Lounge: 11'0 x 11'0 (3.36m x 3.36m)

Kitchen/Diner: 17'3 x 11'11 (5.26m x 3.63m)

Conservatory: 9'1 x 8'0 (2.77m x 2.44m)

FIRST FLOOR

Landing

Bedroom 2: 11'11 x 10'7 (3.63m x 3.23m)

Bedroom 3: 12'11 x 10'11 (3.94m x 3.33m)

Bathroom: 9'0 x 6'5 (2.75m x 1.96m)

SECOND FLOOR

Landing

Bedroom 1: 16'9 x 11'5 (5.11m x 3.48m)

En-Suite Shower Room: 7'4 x 7'4 (2.24m x 2.24m)

OUTSIDE

Front and Rear Garden

OUTBUILDING

Garage



Main features

- Immaculately presented throughout!
- Loft conversion with en-suite shower room
- Open plan kitchen/diner ideal for entertaining
- Garage and off-road parking
- Walking distance to the historic High Street and high speed station



Nearest Schools

Primary Schools: Delce Junior School 0.2 miles

Secondary Schools: The Rochester Grammar School for Girls 0.3 miles



Transport Information

Train Stations: Chatham 1.2 miles, Rochester 1.5 miles, Strood 1.8 miles



Address

St. William's Way, Rochester, Kent, ME1



Directions

For directions to this property please contact us.



Call Rochester Branch 01634 830925 ■ wardsofkent.co.uk



- Legal advice should be taken to verify fixtures/fittings, planning, alterations and/or lease details
- Appliances & services are untested, dimensions are approximate and floor plans are not to scale
- Through a Homewise Home For Life Plan people aged 60+ can secure this property for up to 59% less, by purchasing a Lifetime Lease.



11529974/20250222/DG/AB