



Price
£350,000

Freehold

4x  1x  2x 

**The Fairway, Rochester,
Kent, ME1**

OVER 60?

Secure this property
for up to **59% less!**

Wards
Helping you move forwards



Main features

- Perfect first time buy!
- Popular residential area with primary and secondary schools on your doorstep
- Potential to add off-road parking subject to planning permission
- Lounge and dining area ideal for entertaining
- Landscaped rear garden

Accommodation

GROUND FLOOR

Hallway

Lounge : 14'2 x 12'6 (4.32m x 3.81m)

Dining Area: 10'7 x 8'10 (3.23m x 2.69m)

Kitchen: 10'0 x 8'11 (3.05m x 2.72m)

FIRST FLOOR

Landing

Bedroom 1: 12'0 x 9'7 (3.66m x 2.92m)

Bedroom 2: 12'10 x 8'2 (3.91m x 2.49m)

Bedroom 3: 11'2 x 8'11 (3.41m x 2.72m)

Bedroom 4: 9'0 x 6'7 (2.75m x 2.01m)

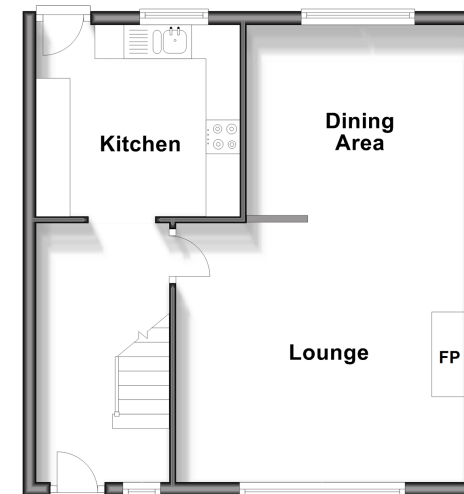
Bathroom: 7'5 x 5'5 (2.26m x 1.65m)

OUTSIDE

Front and Rear Garden

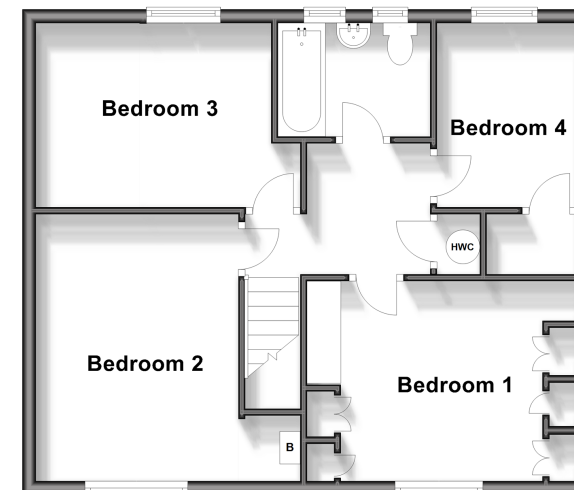
Ground Floor

Approx. 42.8 sq. metres (460.7 sq. feet)



First Floor

Approx. 53.8 sq. metres (579.2 sq. feet)



Call Rochester - 01634 830925 ■ wardsofkent.co.uk

- Legal advice should be taken to verify fixtures/fittings, planning, alterations and/or lease details
- Appliances & services are untested, dimensions are approximate and floor plans are not to scale
- Through a Homewise Home For Life Plan people aged 60+ can secure this property for up to 59% less, by purchasing a Lifetime Lease.



11529889/20250621/DG/AB