



Price

£190,000

Leasehold

2x  1x  1x 

**Cordelia Crescent,
Rochester, Kent, ME1**

OVER 60?

Secure this property
for up to **59% less!**

Wards
Helping you move forwards



Main features

- Ground floor apartment
- Private rear garden with side access
- Lease extension in place to add 90 years onto the existing lease
- Ready to move into as no work required
- Close to local amenities

Accommodation

GROUND FLOOR

Hallway

Lounge: 17'0 x 10'11 (5.19m x 3.33m)

Kitchen: 9'3 x 7'3 (2.82m x 2.21m)

Bedroom 1: 12'3 x 10'11 (3.74m x 3.33m)

Bedroom 2: 10'11 x 9'3 (3.33m x 2.82m)

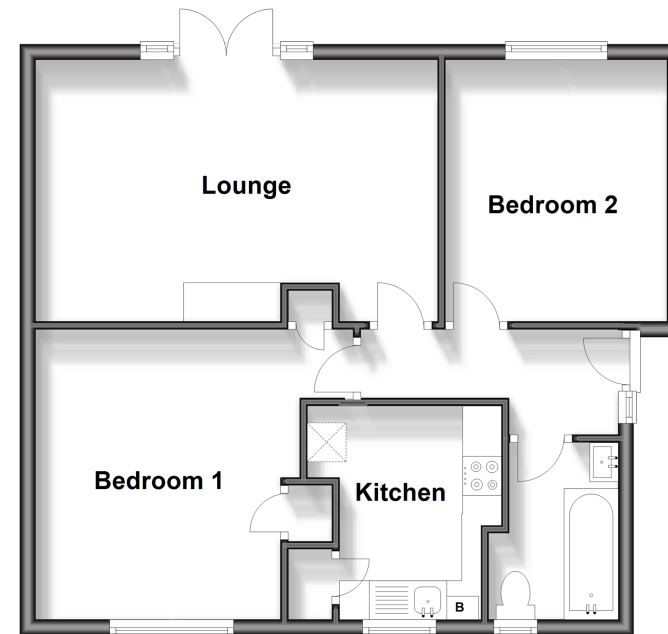
Bathroom: 7'6 x 5'5 (2.29m x 1.65m)

OUTSIDE

Rear Garden

Ground Floor

Approx. 56.1 sq. metres (604.1 sq. feet)



Call Rochester - 01634 830925 ■ wardsofkent.co.uk

■ Legal advice should be taken to verify fixtures/fittings, planning, alterations and/or lease details
 ■ Through a Homewise Home For Life Plan people aged 60+ can secure this property for up to 50% less, by purchasing a Lifetime Lease.

■ Appliances & services are untested, dimensions are approximate and floor plans are not to scale



11527073/20250823/AB/AB