



Price

£270,000

Freehold

2x  1x  1x 

**Oliver Twist Close,
Rochester, Kent, ME1**

OVER 60?

Secure this property
for up to **59% less!**

Wards
Helping you move forwards



Main features

- Positioned on a modern riverside development
- Perfect first time buy or investment opportunity
- Allocated parking
- Sold chain free
- Close to historic High Street with high speed station

Accommodation

GROUND FLOOR

Hallway
Kitchen: 9'10 x 6'5 (3.00m x 1.96m)
Lounge/Diner: 17'8 x 12'6 (5.39m x 3.81m)

FIRST FLOOR

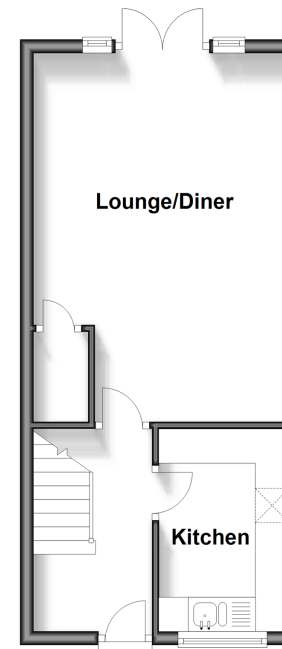
Landing
Bedroom 1: 10'8 x 10'7 (3.25m x 3.23m)
Bedroom 2: 12'4 x 7'5 (3.76m x 2.26m)
Bathroom: 7'6 x 5'8 (2.29m x 1.73m)

OUTSIDE

Rear Garden
Allocated Parking

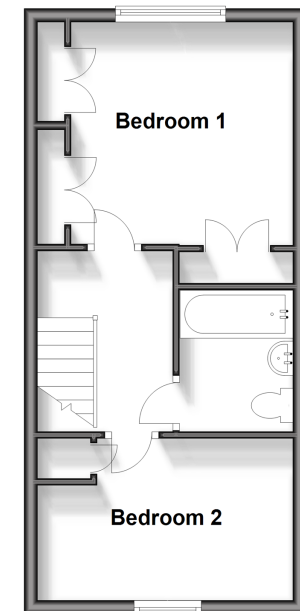
Ground Floor

Approx. 32.1 sq. metres (345.8 sq. feet)



First Floor

Approx. 32.1 sq. metres (345.8 sq. feet)



Call Rochester - 01634 830925 ■ wardsofkent.co.uk

■ Legal advice should be taken to verify fixtures/fittings, planning, alterations and/or lease details
■ Through a Homewise Home For Life Plan people aged 60+ can secure this property for up to 59% less, by purchasing a Lifetime Lease.

■ Appliances & services are untested, dimensions are approximate and floor plans are not to scale



11529862/20250611/SN/AB