



**Price**  
**£250,000**

**Freehold**

2x  1x  2x 

**Catherine Street,  
Rochester, Kent, ME1**

**OVER 60?**

Secure this property  
for up to **59% less!**

*Wards*  
Helping you move forwards



## Main features

- Immaculately presented throughout!
- Perfect for first time buyers looking to get onto the property ladder
- Suitable for investors
- Close to the historic High Street with high speed train station
- Offered with no forward chain

## Accommodation

### SPLIT LEVEL GROUND FLOOR

- Lounge: 12'2 x 9'8 (3.71m x 2.95m)
- Dining Room: 12'1 x 9'8 (3.69m x 2.95m)
- Kitchen: 8'6 x 6'10 (2.59m x 2.08m)

### SPLIT LEVEL FIRST FLOOR

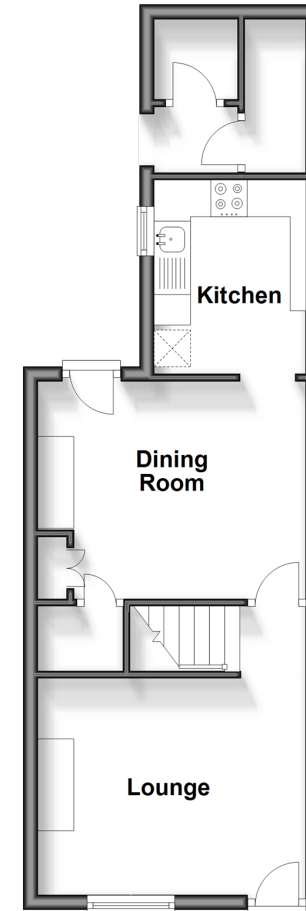
- Landing
- Bedroom 1: 12'1 x 9'7 (3.69m x 2.92m)
- Bedroom 2: 10'1 x 9'7 (3.08m x 2.92m)
- Bathroom: 9'0 x 6'10 (2.75m x 2.08m)

### OUTSIDE

- Rear Garden

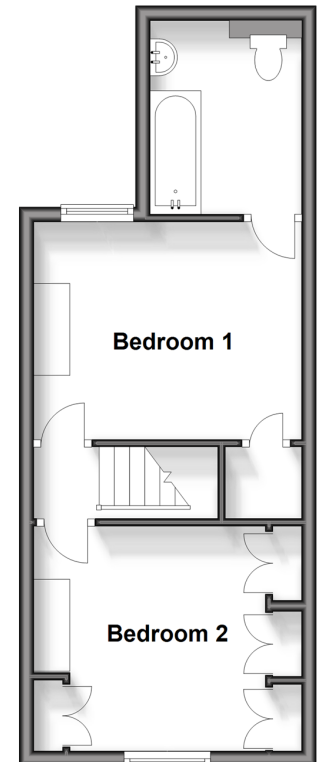
### Split Level Ground Floor

Approx. 34.8 sq. metres (374.3 sq. feet)



### Split Level First Floor

Approx. 32.3 sq. metres (348.1 sq. feet)



**Call Rochester - 01634 830925 ■ [wardsofkent.co.uk](http://wardsofkent.co.uk)**

- Legal advice should be taken to verify fixtures/fittings, planning, alterations and/or lease details
- Appliances & services are untested, dimensions are approximate and floor plans are not to scale
- Through a Homewise Home For Life Plan people aged 60+ can secure this property for up to 59% less, by purchasing a Lifetime Lease.



11529833/20241026/DG/AB