



**OVER 60?**

Secure this property  
for up to **59% less!**

**Price**  
**£165,000**

**Leasehold**

1x  1x  1x 

**The Terrace, Rochester,  
Kent, ME1**

*Wards*  
Helping you move forwards



## Main features

- Perfect first time buy or investment opportunity
- Modern top floor apartment
- Minutes away from the historic High Street
- Open plan living accommodation
- Ready to move straight into as no work required

## Accommodation

### TOP FLOOR

Hallway

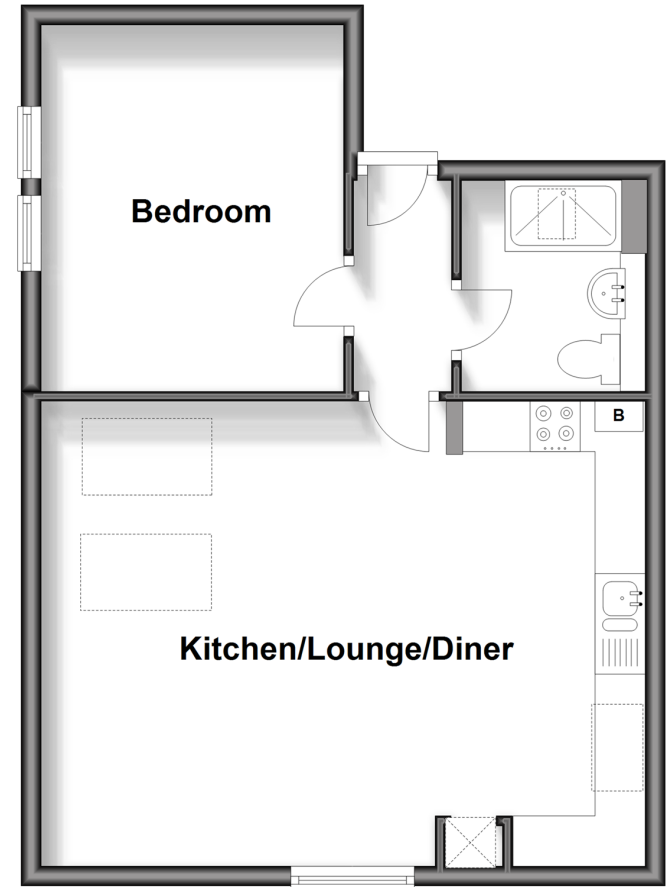
Kitchen/Lounge/Diner: 19'7 x 15'1 (5.97m x 4.60m)

Bedroom: 11'10 x 9'10 (3.61m x 3.00m)

Bathroom: 6'10 x 5'11 (2.08m x 1.80m)

## Top Floor

Approx. 45.7 sq. metres (492.2 sq. feet)



Call Rochester - 01634 830925 ■ [wardsofkent.co.uk](http://wardsofkent.co.uk)

- Legal advice should be taken to verify fixtures/fittings, planning, alterations and/or lease details
- Appliances & services are untested, dimensions are approximate and floor plans are not to scale
- Through a Homewise Home For Life Plan people aged 60+ can secure this property for up to 59% less, by purchasing a Lifetime Lease.



11529770/20240927/AB/AB