



Price
£270,000

Freehold

2x  1x  1x 

**Waterman Way,
Wouldham, Rochester,
Kent, ME1**

OVER 60?

Secure this property
for up to **59% less!**

Wards
Helping you move forwards



Main features

- **First floor coach house with undercover parking**
- **Rarely available freehold and seller has found**
- **Immaculately presented throughout**
- **Village location surrounded by open countryside and riverside walks**
- **All integrated appliances to remain**

Accommodation

FIRST FLOOR

Hallway

Lounge: 14'0 x 13'10 (4.27m x 4.22m)

Kitchen/Diner: 17'10 x 9'4 (5.44m x 2.85m)

Bathroom: 6'9 x 6'2 (2.06m x 1.88m)

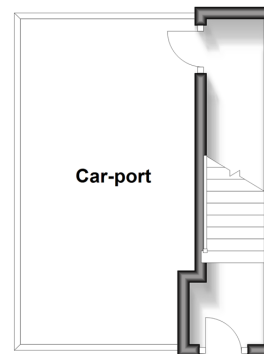
Bedroom 1: 17'9 x 9'8 (5.41m x 2.95m)

Bedroom 2: 13'11 x 8'7 (4.24m x 2.62m)

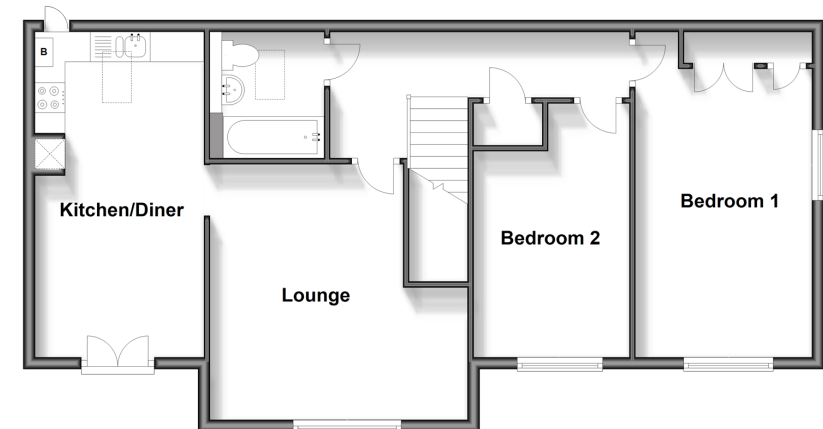
GROUND FLOOR/OUTSIDE

Carpport and Off-Road Parking

Ground Floor
Approx. 5.5 sq. metres (59.7 sq. feet)



First Floor
Approx. 75.3 sq. metres (810.4 sq. feet)



Call Rochester - 01634 830925 ■ wardsof Kent.co.uk

■ Legal advice should be taken to verify fixtures/fittings, planning, alterations and/or lease details
 ■ Through a Homewise Home For Life Plan people aged 60+ can secure this property for up to 59% less, by purchasing a Lifetime Lease.

■ Appliances & services are untested, dimensions are approximate and floor plans are not to scale



11529794/20241115/AB/AB