



Price

£170,000

Leasehold

2x  1x  1x 

Sunderland Close,
Borstal, Rochester, Kent,
ME1

OVER 60?

Secure this property
for up to **59% less!**

Wards
Helping you move forwards



Main features

- Perfect first time buy or investment opportunity
- Private garage and residents parking
- Balcony with panoramic river views
- Close to motorway links and high speed rail services
- No forward chain

Accommodation

SECOND FLOOR

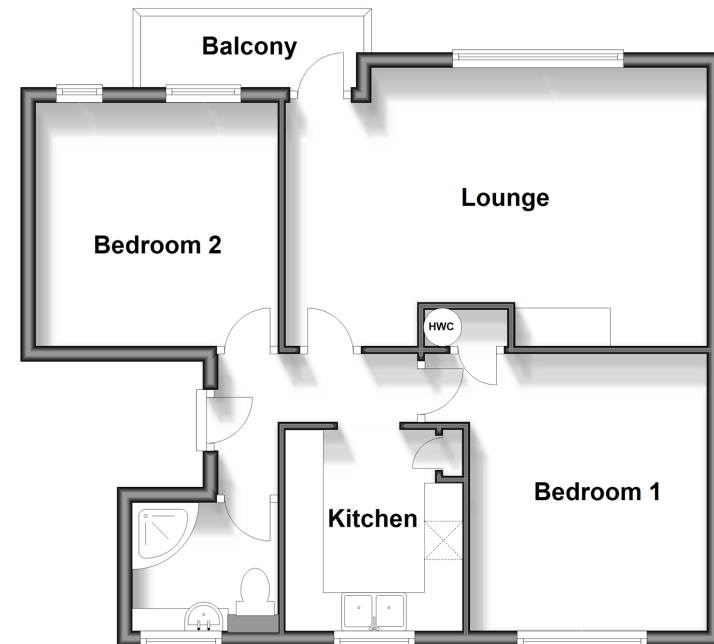
- Hallway
- Lounge: 18'2 x 12'0 (5.54m x 3.66m)
- Balcony
- Kitchen: 8'9 x 7'9 (2.67m x 2.36m)
- Bedroom 1: 11'11 x 10'4 (3.63m x 3.15m)
- Bedroom 2: 10'6 x 10'6 (3.20m x 3.20m)
- Shower Room: 6'2 x 5'5 (1.88m x 1.65m)

OUTSIDE

- Garage
- Communal Gardens

Second Floor

Approx. 55.9 sq. metres (601.7 sq. feet)



Call Rochester - 01634 830925 ■ wardsof Kent.co.uk

- If buying to let, the energy rating will need to be improved to at least 'E' rating before you can let the property
- Appliances & services are untested, dimensions are approximate and floor plans are not to scale

- Legal advice should be taken to verify fixtures/fittings, planning, alterations and/or lease details
- Through a Homewise Home For Life Plan people aged 60+ can secure this property for up to 59% less, by purchasing a Lifetime Lease.



11529751/20240703/SN/AB