



Price

£145,000

Leasehold

2x  1x  1x 

John Street, Rochester,  
Kent, ME1

**OVER 60?**

Secure this property  
for up to **59% less!**

*Wards*  
Helping you move forwards





## Main features

- Perfect first time buy or investment opportunity!
- Balcony overlooking communal gardens
- Catchment area for great schools
- Minutes away from historic High Street
- Sold chain free

## Accommodation

### FIRST FLOOR

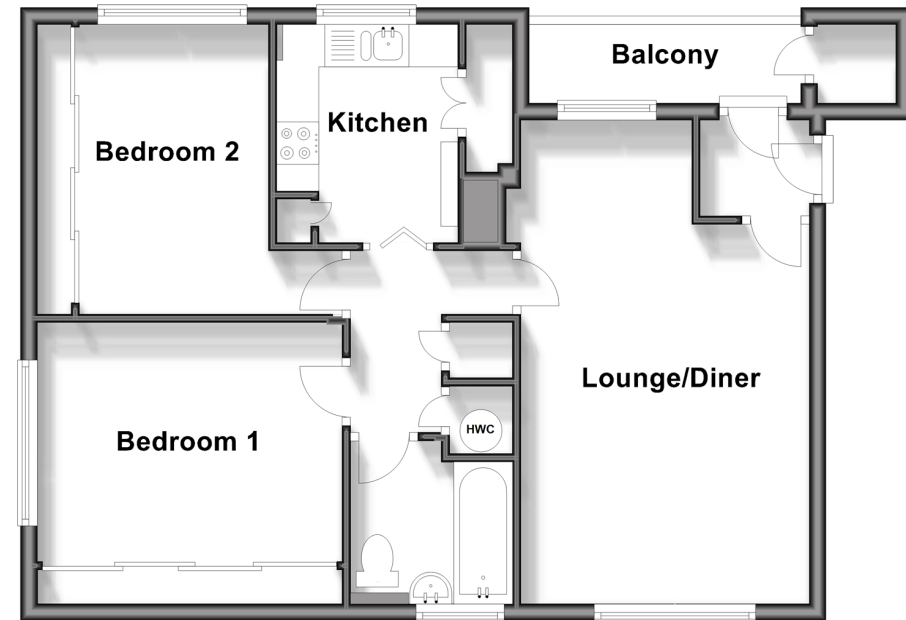
Hallway  
 Lounge/Diner: 17'8 x 12'4 (5.39m x 3.76m)  
 Balcony  
 Kitchen: 8'2 x 6'11 (2.49m x 2.11m)  
 Bedroom 1: 11'3 x 7'11 (3.43m x 2.41m)  
 Bedroom 2: 11'11 x 11'3 (3.63m x 3.43m)  
 Bathroom: 6'3 x 6'2 (1.91m x 1.88m)

### OUTSIDE

Communal Garden

### First Floor

Approx. 59.7 sq. metres (642.1 sq. feet)



Call Rochester - 01634 830925 ■ [wardsofkent.co.uk](http://wardsofkent.co.uk)

■ Legal advice should be taken to verify fixtures/fittings, planning, alterations and/or lease details  
 ■ Through a Homewise Home For Life Plan people aged 60+ can secure this property for up to 59% less, by purchasing a Lifetime Lease.

■ Appliances & services are untested, dimensions are approximate and floor plans are not to scale



11529641/20240603/DG/AB