



OVER 60?

Secure this property
for up to **59% less!**

Price
£300,000

Freehold

3x  1x  1x 

**Orion Road, Rochester,
Kent, ME1**

Wards
Helping you move forwards



Main features

- Perfect for first time buyers
- Open-plan kitchen/diner ideal for entertaining
- Large rear garden with summerhouse
- Catchment area for top performing schools
- No forward chain

Accommodation

GROUND FLOOR

Entrance Hall

Lounge: 18'4 x 11'2 (5.59m x 3.41m)

Kitchen/Diner: 18'4 x 12'0 at widest point (5.59m x 3.66m)

FIRST FLOOR

Landing

Bedroom 1: 10'11 x 8'8 (3.33m x 2.64m)

Bedroom 2: 11'4 x 10'11 (3.46m x 3.33m)

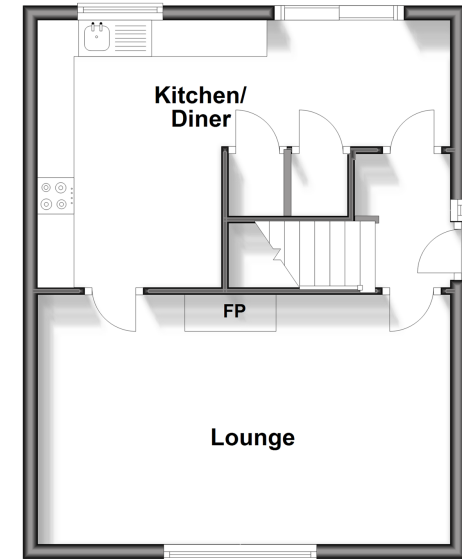
Bedroom 3: 8'4 x 7'1 (2.54m x 2.16m)

Shower Room: 6'2 x 5'7 (1.88m x 1.70m)

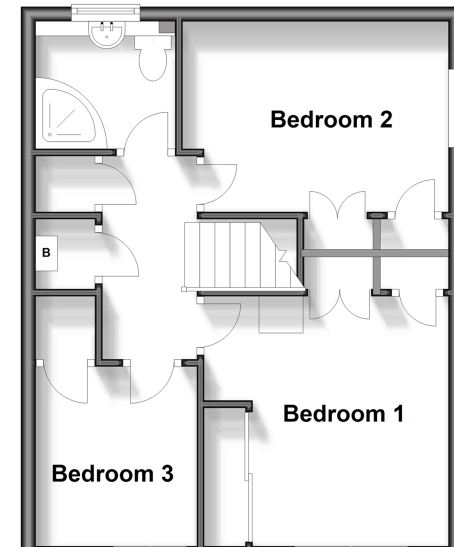
OUTSIDE

Front and Rear Garden

Ground Floor
Approx. 40.7 sq. metres (438.3 sq. feet)



First Floor
Approx. 40.7 sq. metres (438.3 sq. feet)



Call Rochester - 01634 830925 ■ wardsofkennt.co.uk

- Legal advice should be taken to verify fixtures/fittings, planning, alterations and/or lease details
- Appliances & services are untested, dimensions are approximate and floor plans are not to scale
- Through a Homewise Home For Life Plan people aged 60+ can secure this property for up to 59% less, by purchasing a Lifetime Lease.



11527926/20240611/AB/AB