



**Price**  
**£290,000**

**Leasehold**

2x  1x  1x 

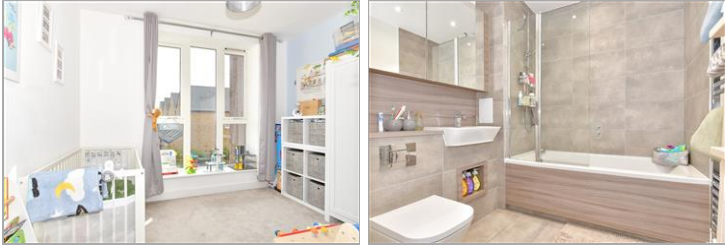
**Corys Road, Rochester,  
Kent, ME1**

**OVER 60?**

Secure this property  
for up to **59% less!**

*Wards*  
Helping you move forwards





## Main features

- Beautifully presented first floor apartment
- Located on the popular Rochester Riverside development
- A stone's throw to the high speed station and historic High Street
- Ideal first time buy or investment
- Ready to move straight into

## Accommodation

### FIRST FLOOR

Hallway

Kitchen/Lounge/Diner: 20'7 x 13'6 (6.28m x 4.12m)

Balcony

Bedroom 1: 13'9 x 9'9 (4.19m x 2.97m)

Bedroom 2: 10'9 x 9'9 (3.28m x 2.97m)

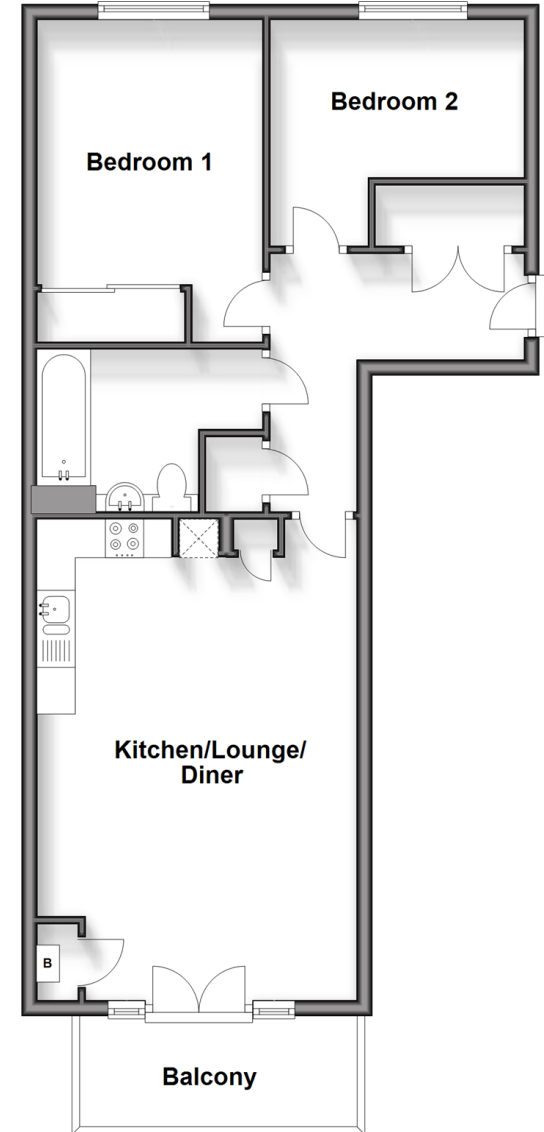
Bathroom: 9'6 x 6'10 (2.90m x 2.08m)

### OUTSIDE

Resident Permit Parking

## First Floor

Approx. 62.8 sq. metres (676.0 sq. feet)



**Call Rochester - 01634 830925 ■ [wardsofkent.co.uk](http://wardsofkent.co.uk)**

- Legal advice should be taken to verify fixtures/fittings, planning, alterations and/or lease details
- Appliances & services are untested, dimensions are approximate and floor plans are not to scale
- Through a Homewise Home For Life Plan people aged 60+ can secure this property for up to 59% less, by purchasing a Lifetime Lease.



11529747/20240507/DG/NW